



Julian
SenSura® Mio &
Brava® user

Ostomy Product Guide

Welcome to Coloplast
p. 4-8

Supporting Products
p. 9-20

Irrigation
p. 21-22

2-Piece Click
p. 23-46

2-Piece Flex
p. 47-58

1-Piece
p. 59-92

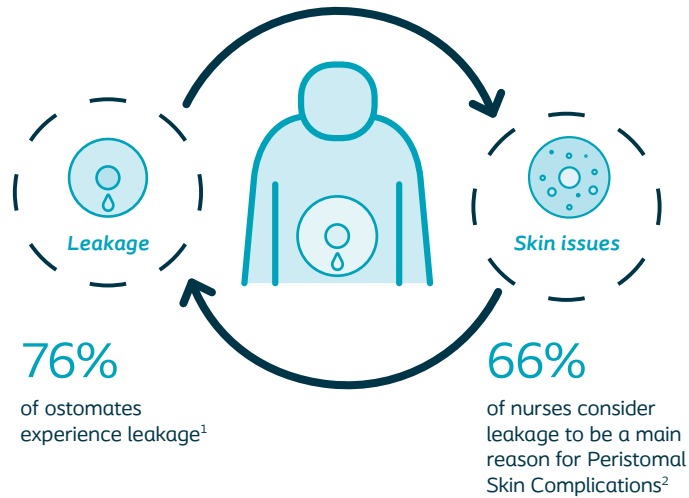
Fistula/Wound Management
p. 93-94

Pediatric
p. 95-104

Services
p. 105-120

The right fit is key to reducing leakage

Leakage affects the majority of ostomy patients¹



BodyFit Technology is an elastic adhesive that is unique to all **SenSura® Mio** barriers

- **Adheres securely** to the body to protect the skin
- **Flexible** to maintain a secure fit during body movement
- **Flows** into creases and folds to prevent leakage



The above image is the SenSura Mio barrier conforming to the curves of the hand and flexing with movement



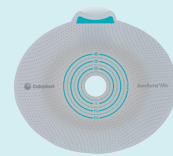
1. Claessens I, Probert R, et. al. (2015). The Ostomy Life Study: the everyday challenges faced by people living with a stoma in a snapshot. *Gastrointestinal Nursing*, 13(5), 18-25.

2. Fellows J, Voegeli D, Håkan-Bloch J, et. al. Multinational survey on living with an ostomy: prevalence and impact of peristomal skin complications. *British Journal of Nursing*. 2021;30(16):947-S44.

Ostomy care for skin, body and mind

SenSura® Mio

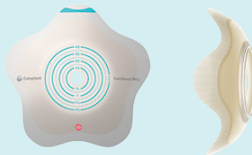
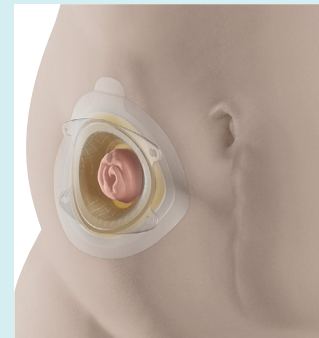
Finding the right fit is essential to help reduce leakage and skin complications



Flat
Features a unique elastic adhesive that follows body shape and movement.



Convex
Provides stability without compromising flexibility. Available in Soft, Light, and Deep to fit a wide range of patient needs.



Convex Flip
The only barrier specifically designed for outward curves. Just flip to fit!



Because every fit matters

Supporting Products
p. 9-20

Irrigation
p. 21-22

2-Piece Click
p. 23-46

2-Piece Flex
p. 47-58

1-Piece
p. 59-92

Fistula/Wound Management
p. 93-94

Pediatric
p. 95-104

Services
p. 105-120



Ostomy care for skin, body and mind

Supporting your care of every patient

Our complete portfolio of 1-piece and 2-piece pouching systems can meet the unique needs of your patients.

2-piece Click pouching systems

Mechanical coupling with a locking mechanism for security you can hear



2-piece Flex pouching systems

Adhesive coupling provides the convenience of a 2-piece with the flexibility of a 1-piece



1-piece pouching systems

For a low profile and ultimate flexibility



Innovative pediatric solutions for little fighters

SenSura® Mio Baby

For babies 30 weeks' gestation to 6 months



- Specifically designed to **meet the needs of premature babies and infants** living with a stoma
- Includes a **refeeding window** for easy access to refeed or expel gas
- **Skin-friendly adhesive** provides long wear time for less disturbances

SenSura® Mio Kids

For kids 6 months to 4 years



- **Star-shaped elastic adhesive** has special petals to hug kids' small, round bellies
- Designed with Bodyfit Technology to provide a **flexible fit** to allow children to move freely
- Options available in 1-piece and 2-piece pouching system to **step up as kids grow**

Supporting Products
p. 9-20

Irrigation
p. 21-22

2-Piece Click
p. 23-46

2-Piece Flex
p. 47-58

1-Piece
p. 59-92

Fistula/Wound Management
p. 93-94

Pediatric
p. 95-104

Services
p. 105-120

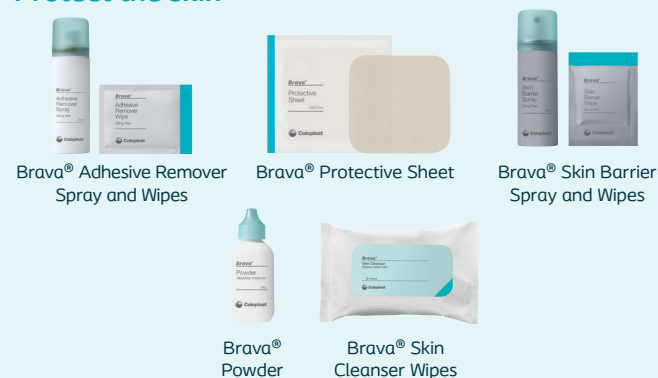


Innovative Supporting Products to personalize fit

Brava® Supporting Products

Our barrier and pouching systems in combination with Brava® Supporting Products provide a personalized pouching solution to help **reduce leakage** and **help reduce skin issues**.

Protect the skin



Secure against leakage



Support with confidence



Lucie
SenSura® Mio &
Brava® User

Brava® Supporting Products Personalizing ostomy solutions for individual needs

Leakage and skin irritation are two of the most common problems faced by people with an ostomy, and they can carry severe consequences.

76% of ostomates experience leakage¹

88% of ostomates experience skin issues²

95% of all people with an ostomy use supporting products³

3.7 supporting products are used on average³

1. Claessens I, Probert R, et. al. (2015). The Ostomy Life Study: the everyday challenges faced by people living with a stoma in a snapshot. *Gastrointestinal Nursing*, 13(5), 18-25.
2. Fellows J, et al. Multinational survey on living with an ostomy: prevalence and impact of peristomal skin complications. *Br J Nurs*. 2021;30(16):S22-S30. doi:10.12968/bjon.2021.30.16.S22.
3. Ostomy Life Study 2019, Data on file.

Welcome to Coloplast
p. 4-8

Supporting Products
p. 9-20

Irrigation
p. 21-22

2-Piece Click
p. 23-46

2-Piece Flex
p. 47-58

1-Piece
p. 59-92

Fistula/Wound Management
p. 93-94

Pediatric
p. 95-104

Services
p. 105-120



Brava® Supporting Products

cover three distinct needs for an effective pouch-change routine



Protect the skin

Care for the skin and continue to encourage healthy peristomal skin.

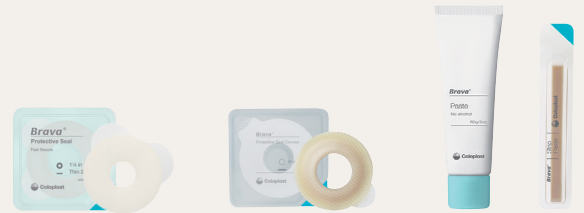


Adhesive Remover Skin Barrier Protective Sheet Powder Skin Cleanser



Secure against leakage

Create a tight seal by filling any dips, deep folds and even the smallest creases to protect the skin around the stoma from leakage and the associated skin complications.



Protective Seal Protective Seal Convex Paste Strip Paste



Support with confidence

Personalized solutions that give a feeling of security and support for many activities...building confidence for everyday life and allowing discretion when it is needed most.



Elastic Barrier Strips Lubricating Deodorant Belt Ostomy Support Belt



For help eliminating airborne odors check out Hex-On Odor Antagonist!

Supporting Products

Welcome to Coloplast
p. 4-8

Brava® Supporting Products

Personalizing ostomy solutions for individual needs

Brava® Elastic Barrier Strips

Skin-friendly strips are used to “picture frame” around an ostomy barrier for extra security.

- Elastic to follow body contours
- Supports longer wear-time by reducing lifting and rolling of the barrier edges
- Reduces unplanned changes
- Absorbs moisture and even sweat while being active
- Skin-friendly and secure alternative to tape
- Not made with natural rubber latex

Without stretching, apply strips after the barrier has been placed

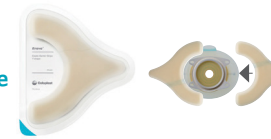


Brava® Elastic Barrier Strips - Curved

For round or oval barrier shapes

Code	Size	Units	HCPCS*
120700**	5½” strips	20 strips	A4362

**2 strips = 1 billable unit of A4362



Brava® Elastic Barrier Strips - Y shape

Wings provide additional support even in areas like hernia, bulges or deep folds

Code	Size	Units	HCPCS*
120721**	5¾” strips	30 strips	A5121

**3 strips = 1 billable unit of A5121



Brava® Elastic Barrier Strips - Straight

For square or rectangular barrier shapes

Code	Size	Units	HCPCS*
120740**	5¼” strips	20 strips	A4362

**2 strips = 1 billable unit of A4362



Brava® Elastic Barrier Strips - XL

60% larger adhesive than original Curved for increased security & support around the barrier

Code	Size	Units	HCPCS*
12076**	6¾” strips	30 strips	A5121

**3 strips = 1 billable unit of A5121

Supporting Products
p. 9-20

Irrigation
p. 21-22

2-Piece Click
p. 23-46

2-Piece Flex
p. 47-58

1-Piece
p. 59-92

Fistula/Wound Management
p. 93-94

Pediatric
p. 95-104

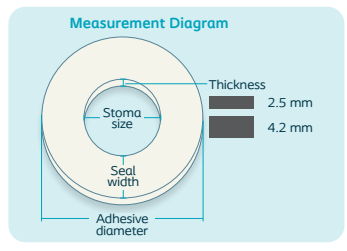
Services
p. 105-120

*For important information regarding the use of HCPCS codes listed and code definitions see page 116



Brava® Protective Seal
Proven Leakage Protection

Brava® Protective Seal is **proven** to significantly reduce leakage by creating a **long-lasting** and **personalized** seal between the barrier and skin.



Brava® Protective Seal

Moldable barrier ring designed to adhere securely and protect the skin around the stoma.

- Easy to shape, apply, and removes cleanly in one piece
- Mold to fit any shape of stoma, including oval
- Soft, flexible material adapts to body shape as the wearer bends and stretches
- Unique polymer formulation is designed to hold up against even the most aggressive output
- Alcohol-free and sting-free
- Multiple sizes for a personalized fit
- Not made with natural rubber latex



Units 10, HCPCS* A4385

Stoma size	Code		Seal width
	Thin (2.5 mm)	Thick (4.2 mm)	
¾" (18 mm)	12035**	12045**	Standard (⅝", 15 mm)
	12036	12046	Wide (¾", 20 mm)
	12038	12048	Wide (7/8", 23 mm)
	12032	-	Extra wide (1 1/8", 29 mm)
1 1/8" (27 mm)	12037**	12047	Standard (⅝", 15 mm)
	12033	-	Extra wide (1", 25 mm)
1 3/8" (34 mm)	12039	12049	Standard (⅝", 15 mm)

**Denotes seals that fit most patients

Brava® Protective Seal Convex

Moldable barrier ring with convexity to provide support for flush or retracted stomas and patients with deep creases, folds or scars around their stoma.

- Sustains convexity after molding to fit individual stoma shapes, including oval and loop
- High-tack adhesive that flows quickly into skin, filling even the smallest creases
- Erosion resistant composition
- High flexibility to maintain seal during body movement
- Steep sides of convex seal are designed to provide convexity
- Thin edges fit snugly around peristomal area
- Not made with natural rubber latex



Units 10, HCPCS* A4411

Stoma size	Code	Thickness
¾" (20 mm)	12090**	8.2 mm
1" (25 mm)	12091	8.2 mm
1 3/16" (30 mm)	12092**	8.2 mm
1 3/8" (35 mm)	12093	8.2 mm
1 9/16" (40 mm)	12094**	8.2 mm
1 ¾" (45 mm)	12095	8.2 mm

**Denotes seals that fit most patients

Six must-have seals

Brava® Protective Seals are all designed to stretch, mold, and fill creases to even out the peristomal area. Below we've outlined **six seals** that meet most clinical needs.

Seals that fit most patients

For smaller stomas

Brava Protective Seal #12035
HCPCS* A4385

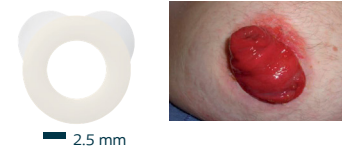
- Thin (2.5 mm) moldable ring with a ¾" (18 mm) opening
- Stretches to fit the most common sizes of stomas



For larger stomas

Brava Protective Seal #12037
HCPCS* A4385

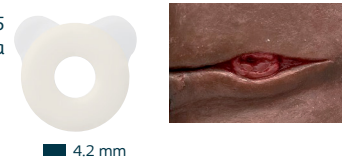
- Thin (2.5 mm) moldable ring with a 1 1/8" (27 mm) opening
- Stretches to fit larger stomas



For challenging peristomal areas

Brava Protective Seal #12045
HCPCS* A4385

- Thick (4.2 mm) moldable ring with a ¾" (18 mm) opening
- Fills creases, folds, and scars next to the stoma
- Can shape and use like strip paste to caulk and even out peristomal area prior to sealing area between stoma and barrier with additional ring fit to stoma size**



**May use more than 1 seal on a single patient

Seals for patients that need convexity

For flush or retracted stomas or deep creases, folds or scars

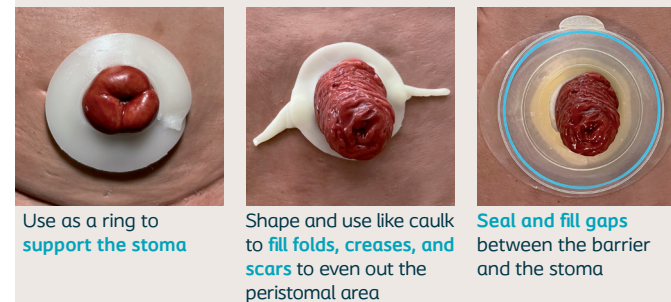
Brava® Protective Seal Convex
HCPCS* A4411

- #12090: ¾" (20 mm) opening
- #12092: 1 3/16" (30 mm) opening
- #12094: 1 9/16" (40 mm) opening

- Select convex seal closest to stoma size, then stretch to fit
- Moldable convex ring with 8.2 mm of convexity
- Convex shape protrudes stoma helping output go into pouch
- Sustains convexity even after being stretched and molded



A versatile seal for a personalized fit



*For important information regarding the use of HCPCS codes listed and code definitions see page 116



Brava® Moldable Ring

Legacy moldable barrier ring fills uneven skin surfaces to create a durable seal between the stoma and ostomy barrier to protect against leakage.

- Helps keep skin healthy by protecting it from output and absorbing moisture from the skin
- Alcohol-free and sting-free
- Not made with natural rubber latex



Code	Size	Units	HCPCS*
120307	2 mm (thin)	10	A4385
120427	4.2 mm (thick)	10	A4385

Brava® Strip Paste

Easy to shape and mold paste strips, fill uneven surfaces for a flat pouching surface.

- Protects peristomal skin from stoma output
- Contains pectin
- Alcohol-free and sting-free
- Not made with natural rubber latex



Code	Size	Units	HCPCS*
26555	2 oz. total package (0.2 oz. per strip)	10 strips	A4406

Brava® Paste

Paste is sting-free and is used to fill uneven skin surfaces for a flat pouching surface.

- Use like caulk to fill creases, folds and scars
- Creates a tight seal between peristomal skin and the ostomy/fistula appliance
- A sting-free alternative to conventional alcohol-based paste
- **No alcohol** = no need to "set"; **contains** pectin
- Not made with natural rubber latex



Code	Size	Units	HCPCS*
12050	2 oz.	1	A4406

Coloplast® Paste

Legacy paste is used to fill uneven skin surfaces for a flat pouching surface.

- Protects against stoma output
- **Low** alcohol content; **no** pectin
- Not made with natural rubber latex



Code	Size	Units	HCPCS*
2650	2 oz.	12	A4405

Brava® Skin Cleanser Wipes

The wipe that cleans and cares. A convenient way to cleanse and maintain healthy skin when changing the ostomy pouching system.

- Does not contain alcohol or perfumes
- No residue left on the skin that could affect barrier adhesion
- Not made with natural rubber latex



Code	Size	Units	HCPCS*
12080	1 wipe	15 wipes/pack	A9286**

Brava® Lubricating Deodorant

A pouch lubricant and deodorizer in one. Add inside pouch to neutralize odor and create a slick surface, allowing output to slide to the bottom of the pouch for easier emptying.

- Powder fresh smell
- Not made with natural rubber latex



Code	Size	Units	HCPCS*
12060	.25 fl. oz. (7.5 mL) sachet	20 sachets	A4394
12061	8 oz. bottle	16 bottles	A4394

Brava® Adhesive Remover Spray

Quick and easy removal of adhesives.

- Designed to lift the edges of the barrier for ease in removal
- Dries within seconds without leaving an oily residue behind
- Alcohol-free, silicone-based, and sting-free
- Spray at any angle
- Spray can be completely emptied, reducing waste
- Not made with natural rubber latex



Code	Size	Units	HCPCS*
120105	1.7 oz. (50 mL)	1	A4455**

Brava® Adhesive Remover Wipes

Wipe away adhesive residue.

- Skin-friendly wipes contain silicone to be gentle on the skin and allows for easy removal of the barrier
- Dries within seconds without leaving an oily residue behind
- Alcohol-free, silicone-based, and sting-free
- Not made with natural rubber latex



Code	Size	Units	HCPCS*
120115	1 wipe	30 wipes/box	A4456**

Brava® Skin Barrier Spray

Creates an invisible skin friendly layer to protect the skin from output and adhesives.

- Dries matte and within seconds without building a thick or tacky layer
- Alcohol-free, silicone-based, and sting-free
- Improves skin condition by reducing skin problems related to output and adhesives
- Adhesion of next pouching system is unaffected
- Not made with natural rubber latex



Code	Size	Units	HCPCS*
120205	1.7 oz. (50 mL)	1	A4369**

*For important information regarding the use of HCPCS codes listed and code definitions see page 116

**Product has not been through PDAC verification



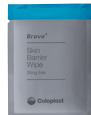
Brava® Skin Barrier Wipes

Convenient wipe creates an invisible skin friendly layer to protect the skin from output and adhesives.

- Improves skin condition by reducing skin problems related to output and adhesives
- Adhesion of next pouching system is unaffected
- Dries matte and within seconds without building a thick or tacky layer
- Alcohol-free, silicone-based, and sting-free
- Not made with natural rubber latex

Tip: Wring the wipe like a wet rag to expel the liquid, then dab to disperse on skin

Code	Size	Units	HCPCS*
120215	1 wipe	30 wipes/box	A5120



Brava® Protective Sheet

Skin friendly hydrocolloid skin barrier that protects the skin from stoma output.

- Adheres to moist skin
- Absorbs moisture and minimizes the risk of maceration
- Easy to cut to fit stoma or desired shape
- Provides a ready surface for good adhesion
- Not made with natural rubber latex

Without stretching, apply sheet before adding a seal or the pouching system

Code	Size	Units	HCPCS*
32105	4 x 4" (10 x 10 cm)	10	A4362
32155	6 x 6" (15 x 15 cm)	5	A5121
32205	8 x 8" (20 x 20 cm)	5	A5122



Brava® Powder

Non-sterile powder for moisture absorption to reduce risk of skin irritation.

- May use in conjunction with Brava® Skin Barrier Spray/Wipes or Prep™ Protective Skin Barrier to "crust", thereby protecting moist skin
- Not made with natural rubber latex

Code	Size	Units	HCPCS*
19075	1 oz. (25 g)	16	A4371



Hex-On® Odor Antagonist

Air spray tackles and controls airborne odors.

- Non-aerosol spray
- Available in both Fresh Linen and Fragrance Free scent
- Not made with natural rubber latex

Code	Product	Size	Units
7583	Fresh Linen	2 fl. oz./59 mL	12
67589	Fragrance Free	2 fl. oz./59 mL	12



Ostomy Scissors

Curved ostomy scissors.

- Not made with natural rubber latex

Code	Size	Units	HCPCS*
95050	One size	30/bx	N/A



Coloplast® Skin Barrier Rings

Soft and flexible legacy barrier rings provide skin protection for stomas, fistulas, and draining wounds.

- Not moldable
- Non-pectin based
- Not made with natural rubber latex

Code	Size	Units	HCPCS*
2310	3/8" (10 mm)	30	A4404
2315	3/5" (15 mm)	30	A4404
2320	3/4" (20 mm)	30	A4404
2325	1" (25 mm)	30	A4404
2330	1 1/8" (30 mm)	30	A4404
2340	1 3/5" (40 mm)	30	A4404
2350	2" (50 mm)	30	A4404



Prep™ Protective Skin Barrier

Clear film forms a breathable barrier protecting against skin irritants such as output and adhesives.

- No need to remove between applications
- Contains alcohol
- Not made with natural rubber latex

Wipes			
Code	Size	Units	HCPCS*
2041	54 wipes/pack	12 packs/box	A5120



Dabber			
Code	Size	Units	HCPCS*
0925	2 fl. oz. (59 mL)	12	A4369

Filtrodor® Pouch Filters

Charcoal-activated, deodorizing filter with self-sealing foam center.

- Adheres directly to pouch
- In sheets of 10 filters with a needle to create perforation for airflow
- Box of 50 filters includes 5 needles
- Not made with natural rubber latex

Code	Units	HCPCS*
0509	50 each / box contains 5 packs of 10	A4368



Coloplast® Pouch Clamp

Simple closure clamp for drainable pouch, is easy to manipulate, even for those with low dexterity.

- Not made with natural rubber latex

Code	Units	HCPCS*
9500	20	A4363



Brava® Ostomy Support Belt

This belt relieves the heavy sensation of hernias and is designed to prevent hernias post-operatively.

- Comfortable and breathable fabric
- Stretchable to fit body contours
- Intuitive pocket closure
- Includes a silicone grip to prevent sliding and rolling
- Cut to fit panel can be used to have pouch on outside
- Not made with natural rubber latex
- All sizes are an 8" width



Tip: Measure before ordering, sizes specific to belt

Code	Size	Units	HCPCS*
12003	S (29-32")	1	A4396
12004	M (31-35")	1	A4396
12005	L (34-39")	1	A4396
12006	XL (37-42")	1	A4396
12007	2XL (40-46")	1	A4396
12008	3XL (44-51")	1	A4396
12009	4XL (50-58")	1	A4396

Brava® Belt for SenSura® Mio

Belt is designed with double hooks for SenSura® Mio barriers to provide extra stability across the entire peristomal area.

- Offers extra security for people with a flush or retracted stoma by supporting a convex barrier and allowing the stoma to protrude
- Adjustable, comfortable and washable
- Neutral gray color blends in under clothing
- Four tabs connect belt to SenSura Mio products with belt tabs
- Not made with natural rubber latex



Tip: Measure before ordering

Code	Size	Units	HCPCS*
4237	Up to 40" length	15	A4367
4247	Up to 61" length	15	A4367

Brava® Belt

Designed with single hooks to be compatible with most conventional ostomy products with belt tabs. The belt provides extra stability across the entire peristomal area.

- Offers extra security for people with a flush or retracted stoma by supporting a convex barrier and allowing the stoma to protrude
- Adjustable, comfortable and washable
- Neutral gray color blends in under clothing
- Not made with natural rubber latex
- **Tip:** Measure before ordering



Code	Size	Units	HCPCS*
4215	Up to 43½" length	15	A4367
4220	Up to 49" length	15	A4367

Coloplast® Urostomy Night Bag

Designed for urine output, the bag includes a fixed connector that fits directly to SenSura® Mio (including SenSura® Mio Kids), SenSura® and Assura® urostomy pouches.

- Holds up to 2 liters (2000 mL)
- 120 cm long flexible tube with anti-reflux valve
- Bag hanger (#5070) not included- order separately
- Not made with natural rubber latex



Code	Units	HCPCS*
21365	10	A4357

Coloplast® Bed Drainage Bag

Wide-lumen bag tubing specifically designed for fecal output.

- Holds up to 2 liters (2000 mL)
- Can be cut to find right length for bed drainage
- Compatible with fistula and wound management systems or high-output pouches
- Bag hanger (#5070) not included- order separately
- Not made with natural rubber latex



Code	Units	HCPCS*
14010	6	A4357

Coloplast® Bag Hanger

Reusable, sturdy, plastic drainage bag hanger secures tubing and ensures bag stability.

- Not made with natural rubber latex



Code	Size	Units	HCPCS*
5070	One Size	1	Medicare N/A Other A4421

Coloplast® Fistula Drain Port

For use with Fistula and Wound Management Systems (page 93). Drain port can be easily applied to the lid to allow for catheter insertion.

- For catheters ranging from 18FR - 22FR, the drain port is ready for use
- For catheters ranging from 24FR - 30FR, pull off the top of the drain port - DO NOT CUT
- Not made with natural rubber latex



Code	Units
14015	12

Coloplast® Transparent Fistula Lid

For use with Fistula and Wound Management Systems (page 93). Replacement lids match the transparent lid included with each fistula pouch.

- Not made with natural rubber latex



Code	Size	Units
14021	Mini (matches 14050)	10
14031	Midi (matches 14060)	10
14041	Maxi (matches 14070)	10



Assura® Ileo Night Bag

Designed to collect ileostomy output generated during the post-op period. Compatible with Assura and SenSura® Click barriers.

- 2 liters (2000 mL) capacity for very high output stomas
- Clamp closure
- Comes with bag hanger

- **Filter**
- Not made with natural rubber latex



Code	Color	Units: 5	HCPCS*
2836			A4413
2837			A4413

Opaque

2836		A4413
2837		A4413

Irrigation Sets

Coloplast® Irrigation Set

Durable water bag with integrated thermometer, bold print, large opening. Can be used with 1- or 2-piece ostomy systems.

- Not made with natural rubber latex

Code	Units	Includes	HCPCS*
1500	1	1-Water Bag/Regulator 1-Cone (#1110)	A4398 A4399

SenSura® Mio Hospital Irrigation Set

Durable water bag with integrated thermometer, bold print, large opening.

- Not made with natural rubber latex



Code	Units	Includes	HCPCS*
1500H	1	1-Water Bag/Regulator 1-Cone (#1110) 4-SenSura® Mio 1-Piece Irrigation Sleeve, cut-to-fit $\frac{3}{8}$ - $2\frac{1}{8}$ " (15-55 mm) (#11750) 2-Closure Clips	A4398 A4399 A4437

SenSura® or Assura® Irrigation Set-Deluxe Version

Components supplied in a travel bag.

- Not made with natural rubber latex



Code	Units	Includes	HCPCS*
12830	1	1-Water Bag/Regulator 1-Cone (#1110) 1-Irrigation Faceplate (#12820) 1-Belt 2-Irrigation Sleeves (#12836)	A4398 A4399 A4361 A4367 A4436

Supporting Products
p. 9-20

Irrigation
p. 21-22

2-Piece Click
p. 23-46

2-Piece Flex
p. 47-58

1-Piece
p. 59-92

Fistula/Wound Management
p. 93-94

Pediatric
p. 95-104

Services
p. 105-120



Irrigation Sleeves

SenSura® Mio 1-Piece Irrigation Sleeve

1-piece irrigation sleeve with SenSura Mio adhesive

is to be used by people

with a colostomy who irrigate their bowels. Cut to fit stoma size.

- Elastic, skin-friendly SenSura Mio adhesive with BodyFit Technology
- Adheres to body contours creating a comfortable and secure fit
- Easy to remove without causing skin irritation
- Customizable stoma opening
- Tapered sleeve shape
- Not made with natural rubber latex



Transparent

Code	Stoma Size	Units	HCPCS*
11750	3/8 - 2 1/8" (15-55 mm)	10	A4437




Irrigation Sleeves (without adhesive)




Irrigation sleeves for use with SenSura® Click or Assura® barriers or faceplate. Consult

chart below to order the correct transparent sleeves.

- Not made with natural rubber latex



Code	Size	Units	HCPCS*
12834		5	A4436
12835		5	A4436
12836		5	A4436

Code	Use with SenSura® Click Product Code	Units
12834	 10011, 10012, 10013, 10015-10017, 11011, 11012, 11015, 11016	5
12835	 10021, 10022, 10023, 10025-10027, 11021-11025	5
12836	 10031, 10032, 10035, 10036, 11031, 11032, 11035, 11036	5

Irrigation Accessories

Assura® Irrigation Faceplate

For use with Brava® Belt 4215 or 4220. (Use with #12836 Irrigation Sleeve) Not compatible with Brava® Belt for SenSura® Mio.

- Not made with natural rubber latex



Code	Units	HCPCS*
12820	1	A4361

Coloplast® Stoma Cone

Soft and flexible stoma cone with tubing.

- Not made with natural rubber latex



Code	Units	HCPCS*
1110	1	A4399

SenSura® Mio

Because every fit matters

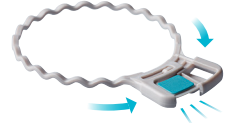
- All **SenSura® Mio** barriers feature **BodyFit Technology** – a unique, elastic adhesive that quickly adheres to the skin and flows into creases and folds
- **SenSura Mio** provides a secure, comfortable fit that allows your patients to feel secure and confident



SenSura® Mio Click

All the benefits of BodyFit Technology in a 2-piece mechanical coupling system

- Reassurance and security with a tactile lock ring
- Mechanical coupling can be repositioned while it remains on the patient's body

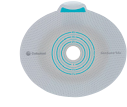


2-Piece SenSura® Mio Click

NOTE: SenSura® Mio Click is NOT compatible with SenSura® Click or Assura® systems.

SenSura® Mio Click Barrier

- Extended wear
- Flat
- Belt tabs for use with 4237, 4247
- Not made with natural rubber latex



Units: 5

Code	Stoma Size	Color	HCPCS*
Cut-to-fit			
10502	3/8-1 3/8" (10-35 mm)	Green	A4409
10512	3/8-1 3/4" (10-45 mm)	Red	A4409
10522	3/8-2 1/8" (10-55 mm)	Blue	A4410
10531	3/8-2 9/16" (10-65 mm)	Yellow	A4410
Pre-cut			
10503	3/4" (20 mm)	Green	A4409
10506	7/8" (22 mm)	Green	A4409
10504	1" (25 mm)	Green	A4409
10505	1 1/8" (28 mm)	Green	A4409
10513	1 3/16" (30 mm)	Red	A4409
10514	1 1/4" (32 mm)	Red	A4409
10515	1 3/8" (35 mm)	Red	A4409
10516	1 1/2" (38 mm)	Red	A4409
10523	1 9/16" (40 mm)	Blue	A4409
10524	1 3/4" (45 mm)	Blue	A4409
10525	2" (50 mm)	Blue	A4409

SenSura® Mio Click Convex Light Barrier

- Extended wear
- Belt tabs for use with 4237, 4247
- FlexShell is designed for stability and flexibility
- Not made with natural rubber latex



Units: 5

Code	Stoma Size	Color	HCPCS*
Cut-to-fit			
16901	3/8 - 3/4" (10-20 mm)	Green	A4407
16911	5/8 - 1 3/16" (15-30 mm)	Red	A4407
16921	5/8 - 1 9/16" (15-40 mm)	Blue	A4407
16931	5/8 - 2 1/16" (15-53 mm)	Yellow	A4408
Pre-cut			
16903	1 1/16" (18 mm)	Green	A4407
16913	1 3/16" (21 mm)	Red	A4407
16914	1" (25 mm)	Red	A4407
16915	1 1/8" (28 mm)	Red	A4407
16923	1 1/4" (31 mm)	Blue	A4407
16924	1 3/8" (35 mm)	Blue	A4407
16933	1 1/2" (38 mm)	Yellow	A4408
16934	1 5/8" (41 mm)	Yellow	A4408

◀ Convex light

*For important information regarding the use of HCPCS codes listed and code definitions see page 116

Welcome to Coloplast
p. 4-8

Supporting Products
p. 9-20

Irrigation
p. 21-22

2-Piece Click
p. 23-46

2-Piece Flex
p. 47-58

1-Piece
p. 59-92

Fistula/Wound Management
p. 93-94

Pediatric
p. 95-104

Services
p. 105-120



2-Piece SenSura® Mio Click

SenSura® Mio Click Convex Deep Barrier

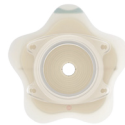
- Extended wear
- Belt tabs for use with 4237, 4247
- FlexShell is designed for stability and flexibility
- Not made with natural rubber latex



Code	Stoma Size	Color	Units: 5 HCPCS*
Cut-to-fit			
16941	3/8 - 3/4" (10-20 mm)		A4407
16951	5/8 - 1 1/16" (15-30 mm)		A4407
16961	5/8 - 1 3/16" (15-40 mm)		A4407
16971	5/8 - 2 1/16" (15-53 mm)		A4408
Pre-cut			
16942	1 1/16" (18 mm)		A4407
16953	1 3/16" (21 mm)		A4407
16954	1" (25 mm)		A4407
16955	1 1/8" (28 mm)		A4407
16963	1 1/4" (31 mm)		A4407
16964	1 3/8" (35 mm)		A4407
16973	1 1/2" (38 mm)		A4408
16974	1 5/8" (41 mm)		A4408

SenSura® Mio Click Convex Flip Barrier

- Extended wear
- Designed for curves, bulges and hernias
- Curved, star-shaped barrier conforms to outward areas with less creasing and folding
- "Flip to fit" design allows for easy application
- Belt tabs for use with 4237, 4247
- Not made with natural rubber latex



Code	Stoma Size	Color	Units: 5 HCPCS*	
Cut-to-fit				
18500	3/8 - 1 3/8" (10-35 mm)		A4407	
18510	3/8 - 1 3/4" (10-45 mm)		A4408	
18520	3/8 - 2 1/8" (10-55 mm)		A4408	
18530	3/8 - 2 9/16" (10-66 mm)		A4408	
Code	Stoma Size	Max Cut	Color	HCPCS*
Pre-cut				
18501	3/4" (20 mm)	1 3/8" (35 mm)		A4407
18511	1" (25 mm)	1 3/4" (45 mm)		A4407
18512	1 3/16" (30 mm)	1 3/4" (45 mm)		A4407
18513	1 3/8" (35 mm)	1 3/4" (45 mm)		A4407
18521	1 3/16" (30 mm)	2 1/8" (55mm)		A4407
18522	1 3/8" (35 mm)	2 1/8" (55 mm)		A4407
18523	1 9/16" (40 mm)	2 1/8" (55 mm)		A4407
18524	1 3/4" (45 mm)	2 1/8" (55 mm)		A4407
18531	1 3/4" (45 mm)	2 9/16" (66 mm)		A4408
18532	2" (50 mm)	2 9/16" (66 mm)		A4408

2-Piece SenSura® Mio Click

NOTE: SenSura® Mio Click is NOT compatible with SenSura® Click or Assura® systems.

SenSura® Mio Click MAXI Drainable Pouch

- EasiClose™ WIDE outlet
- **Full-circle filter**
- Neutral gray, water-resistant textile
- Opaque includes inspection window
- Not made with natural rubber latex



Code	Code	Color	Units: 10 HCPCS*
11" (28 cm) / 655 mL			
Transparent			
11463	11462		A4427
11473	11472		A4427
11483	11482		A4427
11487	11486		A4427

SenSura® Mio Click MAXI Drainable Pouch

- EasiClose™ WIDE outlet
- **Without filter**
- Neutral gray, water-resistant textile
- Not made with natural rubber latex



Code	Color	Units: 10 HCPCS*
11" (28 cm) / 655 mL		
Transparent		
11474		A4426
11484		A4426
11488		A4426

SenSura® Mio Click MIDI Drainable Pouch

- EasiClose™ WIDE outlet
- **Full-circle filter**
- Neutral gray, water-resistant textile
- Peek-a-boo inspection window for easy application
- Not made with natural rubber latex



Code	Color	Units: 10 HCPCS*
10 1/4" (26 cm) / 485 mL		
Opaque gray		
11461		A4427
11471		A4427

Convex deep Indicates Convex Flip

*For important information regarding the use of HCPCS codes listed and code definitions see page 116

Welcome to Coloplast
p. 4-8

Supporting Products
p. 9-20

Irrigation
p. 21-22

2-Piece Click
p. 23-46

2-Piece Flex
p. 47-58

1-Piece
p. 59-92

Fistula/Wound Management
p. 93-94

Pediatric
p. 95-104

Services
p. 105-120



SenSura® Mio Click High Output Pouch with Tap Outlet

- Full-circle filter designed for ileostomy output
- Neutral gray, water-resistant textile
- Transparent pouches feature a printed scale for visual indication of output volume
- Opaque includes inspection window
- Wider-lumen outlet provides effective drainage for patients with thicker output; connects to Coloplast fistula drain bag #14010
- Not made with natural rubber latex



12½" (32 cm) / 1080 mL Units: 10

Code	Code	Color	HCPCS*
Transparent	Opaque gray		
18610	18600		A4413
18611	18601		A4413
18612	18602		A4413
18613	18603		A4413

SenSura® Mio Click High Output Pouch with Soft Outlet

- Full-circle filter designed for ileostomy output
- Neutral gray, water-resistant textile
- Transparent pouches feature a printed scale for visual indication of output volume
- Opaque includes inspection window
- Soft outlet provides effective drainage; connects to a standard drain bag or Coloplast fistula drain bag #14010
- Not made with natural rubber latex



12½" (32 cm) / 1080 mL Units: 10

Code	Code	Color	HCPCS*
Transparent	Opaque gray		
18640	18630		A4413
18641	18631		A4413
18642	18632		A4413

SenSura® Mio Click Drainable Pouch with Tap Outlet

- Full-circle filter designed for ileostomy output
- Neutral gray, water-resistant textile
- Opaque includes inspection window
- Wider-lumen outlet provides effective drainage for patients with thicker output; connects to Coloplast fistula drain bag #14010
- Not made with natural rubber latex



9" (23 cm) / 650 mL Units: 10

Code	Color	HCPCS*
Opaque gray		
18620		A4427
18621		A4427
18622		A4427

SenSura® Mio Click MAXI Closed Pouch

- Full-circle filter
- Neutral gray, water-resistant textile
- Opaque includes inspection window
- Not made with natural rubber latex



8¼" (20½ cm) / 570 mL Units: 30

Code	Code	Color	HCPCS*
Transparent			
Opaque gray			
N/A	11402		A4423
N/A	11413		A4423
N/A	11422		A4423
11426	11425		A4423

SenSura® Mio Click MIDI Closed Pouch

- Full-circle filter
- Neutral gray, water-resistant textile
- Peek-a-boo inspection window for easy application
- Not made with natural rubber latex



7¼" (18½ cm) / 275 mL Units: 30

Code	Color	HCPCS*
Opaque gray		
11401		A4423
11412		A4423
11421		A4423

Supporting Products
p. 9-20

Irrigation
p. 21-22

2-Piece Click
p. 23-46

2-Piece Flex
p. 47-58

1-Piece
p. 59-92

Fistula/Wound Management
p. 93-94

Pediatric
p. 95-104

Services
p. 105-120

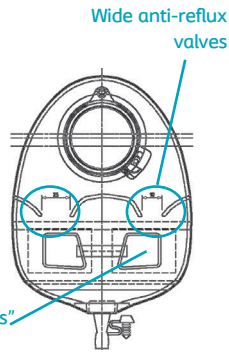


Urostomy

SenSura® Mio Uro

Wide anti-reflux valves support varying ways of managing stents:

- Stents threaded into a pouch connected to a night drainage bag
- Rolling the stents in the top of the pouch, making a loop
- Stents that have been cut



SenSura® Mio Click MAXI Urostomy Pouch

- Multi-chambers minimize sloshing
- Wider anti-reflux valves prevent urine from washing over the stoma
- Soft outlet can be connected to urostomy night bag #21365 or any standard night or leg bag
- Neutral gray, water-resistant textile
- Not made with natural rubber latex



10½" (26½ cm) / 480 mL

Units: 10

Code	Code	Color	HCPCS*
Transparent	Opaque gray		
11492	11491		A4433
11498	11497		A4433
11500	11499		A4433

SenSura® Mio Click Barrier + Drainable Pouch Single Use Kit

- Extended wear
- Barrier #10522 Flat with belt tabs
- Pouch #11483 MAXI / EasiClose™ WIDE outlet
- Instructions for use
- Stoma measuring guide
- Not made with natural rubber latex



Units: 5

Code	Stoma Size	Color	HCPCS*
Cut-to-fit / Transparent			
21008	⅜ - 2½" (10-55 mm)		A4410, A4427

NOTE: SenSura® Mio Click is NOT compatible with SenSura® Click or Assura® systems. SenSura® Click and Assura® are compatible.

SenSura® Click Flat Barrier

- Standard wear
- Belt tabs for use with 4215, 4220
- Not made with natural rubber latex



Units: 5

Code	Stoma Size	Color	HCPCS*
Cut-to-fit			
10011	⅜ - 1⅜" (10-35 mm)		A4414
10021	⅜ - 1¾" (10-45 mm)		A4414
10031	⅜ - 2⅛" (10-55 mm)		A4414
10041	⅜ - 2½" (10-65 mm)		A4415**
Pre-cut			
10012	1⅜" (20 mm)		A4414
10013	1" (25 mm)		A4414
10022	1⅜" (30 mm)		A4414
10023	1⅜" (35 mm)		A4414
10032	1⅞" (40 mm)		A4414

SenSura® Click Xpro Flat Barrier

- Extended wear
- Belt tabs
- Not made with natural rubber latex



Units: 5

Code	Stoma Size	Color	HCPCS*
Cut-to-fit			
10015	⅜ - 1⅜" (10-35 mm)		A4409
10025	⅜ - 1¾" (10-45 mm)		A4409
10035	⅜ - 2¼" (10-55 mm)		A4409
10045	⅜ - 2½" (10-65 mm)		A4410
Pre-cut			
10016	1⅜" (20 mm)		A4409
10017	1" (25 mm)		A4409
10026	1⅜" (30 mm)		A4409
10027	1⅜" (35 mm)		A4409
10036	1⅞" (40 mm)		A4409



2-Piece SenSura® Click

SenSura® Click Convex Light Barrier

- Standard wear
- Belt tabs
- Not made with natural rubber latex



Units: 5

Code	Stoma Size	Color	HCPCS*
------	------------	-------	--------

Cut-to-fit

11011	5/8 - 7/8" (15-22 mm)		A4373
11021	5/8 - 1 1/16" (15-33 mm)		A4373
11031	5/8 - 1 11/16" (15-43 mm)		A4373
11041	5/8 - 2 1/16" (15-53 mm)		A4373**

Pre-cut

11012	7/8" (22 mm)		A4373
11022	1" (25 mm)		A4373
11023	1 1/8" (28 mm)		A4373
11024	1 1/4" (31 mm)		A4373
11032	1 3/8" (35 mm)		A4373

SenSura® Click Xpro Convex Light Barrier

- Extended wear
- Belt tabs
- Not made with natural rubber latex



Units: 5

Code	Stoma Size	Color	HCPCS*
------	------------	-------	--------

Cut-to-fit

11015	5/8 - 7/8" (15-22 mm)		A4407
11025	5/8 - 1 1/16" (15-33 mm)		A4407
11035	5/8 - 1 11/16" (15-43 mm)		A4407
11045	5/8 - 2 1/16" (15-53 mm)		A4408

Pre-cut

11016	7/8" (22 mm)		A4407
11026	1" (25 mm)		A4407
11027	1 1/8" (28 mm)		A4407
11028	1 1/4" (31 mm)		A4407
11036	1 3/8" (35 mm)		A4407

Indicates convexity

2-Piece SenSura® Click

SenSura® Click MAXI Drainable Pouch

- EasiClose™ WIDE outlet
- **Filter**
- Soft cloth on back (and front of opaque)
- Not made with natural rubber latex



Units: 20

11 1/2" (29 1/2 cm) / 655 mL

Code	Code	Color	HCPCS*
------	------	-------	--------

Transparent Opaque

11194	11124		A4427
11195	11125		A4427
11196	11126		A4427
11197	11127		A4427**

SenSura® Click MIDI Drainable Pouch

- EasiClose™ WIDE outlet
- **Filter**
- Soft cloth on front and back
- Not made with natural rubber latex



Units: 20

10 1/2" (26 1/2 cm) / 485 mL

Code	Color	HCPCS*
------	-------	--------

Opaque

11114		A4427
11115		A4427

SenSura® Click MAXI Drainable Pouch

- EasiClose™ WIDE outlet
- **Without filter**
- Soft cloth on back (and front of opaque)
- Not made with natural rubber latex



Units: 20

11 1/2" (29 1/2 cm) / 655 mL

Code	Code	Color	HCPCS*
------	------	-------	--------

Transparent Opaque

11185	11135		A4426
11186	11136		A4426

*For important information regarding the use of HCPCS codes listed and code definitions see page 116

**Product has not been through PDAC verification

Welcome to Coloplast
p. 4-8

Supporting Products
p. 9-20

Irrigation
p. 21-22

2-Piece Click
p. 23-46

2-Piece Flex
p. 47-58

1-Piece
p. 59-92

Fistula/Wound Management
p. 93-94

Pediatric
p. 95-104

Services
p. 105-120



NOTE: SenSura® Click is compatible with Assura® but NOT with SenSura® Mio Click.

SenSura® Click Magnum High Output Drainable Pouch

- Wider-lumen outlet provides effective drainage for patients with thicker output; connects to Coloplast fistula drain bag #14010
- **Filter**
- Soft cloth on back (and front of opaque)
- Not made with natural rubber latex

12½" (32 cm) / 1160 mL



Units: 10

Code	Code	Color	HCPCS*
Transparent	Opaque		
19050	19040		A4413**
19051	19041		A4413**
19052	19042		A4413**

For Assura® Ileo Night Bag, see page 20.

SenSura® Click MAXI Closed Pouch

- **Filter**
- Soft cloth on back (and front of opaque)
- Not made with natural rubber latex

8½" (21 cm) / 570 mL



Units: 30

Code	Code	Color	HCPCS*
Transparent	Opaque		
NA	10164		A4423
NA	10165		A4423
NA	10166		A4423
10187	10167		A4423**

SenSura® Click MIDI Closed Pouch

- **Filter**
- Soft cloth on front and back
- Not made with natural rubber latex

7" (18 cm) / 275 mL



Units: 30

Code	Color	HCPCS*
Opaque		
10154		A4423
10155		A4423
10156		A4423

For Assura® Stoma Caps, see page 43.

Urostomy

SenSura® Click Uro MAXI Urostomy Pouch

- Multi-chambers minimize sloshing
- Wider anti-reflux valves prevent urine from washing over the stoma
- Soft outlet can be connected to urostomy night bag #21365 or any standard night or leg bag
- Soft cloth on back (and front of opaque)
- Not made with natural rubber latex



10⅜" (26 cm) / 480 mL

Units: 10

Code	Code	Color	HCPCS*
Transparent	Opaque		
11854	11844		A4433
11855	11845		A4433
11856	11846		A4433

SenSura® Click Uro MIDI Urostomy Pouch

- Multi-chambers minimize sloshing
- Wider anti-reflux valves prevent urine from washing over the stoma
- Soft outlet can be connected to urostomy night bag #21365 or any standard night or leg bag
- Soft cloth on back (and front of opaque)
- Not made with natural rubber latex



9½" (24 cm) / 430 mL

Units: 10

Code	Code	Color	HCPCS*
Transparent	Opaque		
11851	11841		A4433

SenSura® Click Standard Wear Barrier + Drainable Pouch Single Use Kit

- Barrier #10031 Flat with belt tabs
- Pouch #11196 MAXI / EasiClose™ WIDE outlet
- Instructions for use
- Stoma measuring guide
- Not made with natural rubber latex



Units: 5

Code	Stoma Size	Color	HCPCS*
Cut-to-fit / Transparent			
11009	⅜ - 2¼" (10-55 mm)		A4414, A4427

*For important information regarding the use of HCPCS codes listed and code definitions see page 116
**Product has not been through PDAC verification



2-Piece SenSura® Click

SenSura® Click Standard Wear Barrier + Drainable Pouch Single Use Kit

- Barrier #11031 Convex Light with belt tabs
- Pouch #11196 MAXI / EasiClose™ WIDE outlet
- Instructions for use
- Stoma measuring guide
- Not made with natural rubber latex



Units: 5

Code	Stoma Size	Color	HCPCS*
Cut-to-fit / Transparent			
11010	5/8 - 1 1/16" (15-43 mm)		A4373, A4427

SenSura® Click Xpro Extended Wear Barrier + Urostomy Pouch Single Use Kit

- Barrier #10035 Flat with belt tabs
- Pouch #11856 MAXI / soft outlet
- Urostomy adapter
- Instructions for use
- Stoma measuring guide
- Not made with natural rubber latex

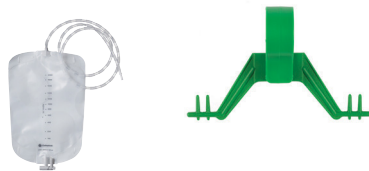


Units: 5

Code	Stoma Size	Color	HCPCS*
Cut-to-fit / Transparent			
11004	3/8 - 2 1/4" (10-55 mm)		A4409, A4433

Urostomy Night Bag and Bag Hanger

See Supporting Products on page 19 for more information.



Indicates convexity

2-Piece Assura®

NOTE: Assura® is compatible with SenSura® Click, but NOT with SenSura® Mio Click.

Assura® Flat Barrier

- Standard wear
- Belt tabs for use with 4215, 4220
- Not made with natural rubber latex



Units: 5

Code	Stoma Size	Color	HCPCS*
Cut-to-fit			
2881	3/8 - 1 3/8" (10-35 mm)		A4414
2882	3/8 - 1 3/4" (10-45 mm)		A4414
2883	3/8 - 2 1/4" (10-55 mm)		A4414

Pre-cut

12841	1 3/16" (20 mm)		A4414
12842	1" (25 mm)		A4414
12844	1 3/16" (30 mm)		A4414
12845	1 3/8" (35 mm)		A4414
12847	1 7/16" (40 mm)		A4414
12848	1 3/4" (45 mm)		A4414

Assura® Flat Barrier

- Extended wear
- Belt tabs for use with 4215, 4220
- Not made with natural rubber latex



Units: 5

Code	Stoma Size	Color	HCPCS*
Cut-to-fit			
2831	3/8 - 1 3/8" (10-35 mm)		A4409
2832	3/8 - 1 3/4" (10-45 mm)		A4409
2833	3/8 - 2 1/4" (10-55 mm)		A4409

Pre-cut

14250	5/8" (15 mm)		A4409
14251	1 3/16" (20 mm)		A4409
14252	1" (25 mm)		A4409
14254	1 3/16" (30 mm)		A4409
14255	1 3/8" (35 mm)		A4409
14257	1 7/16" (40 mm)		A4409
14258	1 3/4" (45 mm)		A4409

*For important information regarding the use of HCPCS codes listed and code definitions see page 116

Welcome to Coloplast
p. 4-8

Supporting Products
p. 9-20

Irrigation
p. 21-22

2-Piece Click
p. 23-46

2-Piece Flex
p. 47-58

1-Piece
p. 59-92

Fistula/Wound Management
p. 93-94

Pediatric
p. 95-104

Services
p. 105-120



2-Piece Assura®

NOTE: Assura® is compatible with SenSura® Click, but NOT with SenSura® Mio Click.

Assura® Convex Light Barrier

- Standard wear
- Belt tabs for use with 4215, 4220
- Not made with natural rubber latex



Units: 5

Code	Stoma Size	Color	HCPCS*
Cut-to-fit			
14261	5/8 - 15/16" (15-23 mm)		A4373
14262	5/8 - 15/16" (15-33 mm)		A4373
14263	5/8 - 11/16" (15-43 mm)		A4373
Pre-cut			
14271	3/4" (18 mm)		A4373
14272	7/8" (22 mm)		A4373
14273	1" (25 mm)		A4373
14274	1 1/8" (28 mm)		A4373
14275	1 1/4" (31 mm)		A4373
14276	1 3/8" (35 mm)		A4373
14277	1 1/2" (38 mm)		A4373
14278	1 5/8" (41 mm)		A4373

Assura® Convex Light Barrier

- Extended wear
- Belt tabs for use with 4215, 4220
- Not made with natural rubber latex



Units: 5

Code	Stoma Size	Color	HCPCS*
Cut-to-fit			
14281	5/8 - 15/16" (15-23 mm)		A4407
14282	5/8 - 15/16" (15-33 mm)		A4407
14283	5/8 - 11/16" (15-43 mm)		A4407
Pre-cut			
14291	3/4" (18 mm)		A4407
14292	7/8" (22 mm)		A4407
14293	1" (25 mm)		A4407
14294	1 1/8" (28 mm)		A4407
14295	1 1/4" (31 mm)		A4407
14296	1 3/8" (35 mm)		A4407
14297	1 1/2" (38 mm)		A4407
14298	1 5/8" (41 mm)		A4407

Indicates convexity

2-Piece Assura®

Assura® Deep Convex Barrier

- Standard wear
- Belt tabs for use with 4215, 4220
- Not made with natural rubber latex



Units: 5

Code	Stoma Size	Color	HCPCS*
Cut-to-fit			
12716	5/8 - 15/16" (15-33 mm)		A4373
12719	5/8 - 11/16" (15-43 mm)		A4373
Pre-cut			
12701	5/8" (15 mm)		A4373
12702	3/4" (18 mm)		A4373
12703	7/8" (22 mm)		A4373
12704	1" (25 mm)		A4373
12705	1 1/8" (28 mm)		A4373
12706	1 1/4" (31 mm)		A4373
12707	1 3/8" (35 mm)		A4373
12708	1 1/2" (38 mm)		A4373
12709	1 5/8" (41 mm)		A4373

Assura® Deep Convex Barrier

- Extended wear
- Belt tabs for use with 4215, 4220
- Not made with natural rubber latex



Units: 5

Code	Stoma Size	Color	HCPCS*
Cut-to-fit			
14243	5/8 - 15/16" (15-23 mm)		A4407
14246	5/8 - 15/16" (15-33 mm)		A4407
14249	5/8 - 11/16" (15-43 mm)		A4407
Pre-cut			
14232	3/4" (18 mm)		A4407
14233	7/8" (22 mm)		A4407
14234	1" (25 mm)		A4407
14235	1 1/8" (28 mm)		A4407
14236	1 1/4" (31 mm)		A4407
14237	1 3/8" (35 mm)		A4407
14238	1 1/2" (38 mm)		A4407
14239	1 5/8" (41 mm)		A4407

Welcome to Coloplast
p. 4-8

Supporting Products
p. 9-20

Irrigation
p. 21-22

2-Piece Click
p. 23-46

2-Piece Flex
p. 47-58

1-Piece
p. 59-92

Fistula/Wound Management
p. 93-94

Pediatric
p. 95-104

Services
p. 105-120



2-Piece Assura®

NOTE: Assura® is compatible with SenSura® Click, but NOT with SenSura® Mio Click.

Assura® MAXI Drainable Pouch

- EasiClose™ WIDE outlet
- **Filter**
- Soft cloth on back (and front of opaque)
- Not made with natural rubber latex

11½" (29½ cm) / 655 mL

Code	Color	HCPCS*
Transparent	Opaque	
15974	15984	A4427
15975	15985	A4427
15976	15986	A4427



Units: 10

Assura® MAXI Drainable Pouch

- EasiClose™ WIDE outlet
- **Without filter**
- Soft cloth on front and back
- Not made with natural rubber latex

11½" (29½ cm) / 655 mL

Code	Color	HCPCS*
Opaque		
15982		A4426
15983		A4426



Units: 10

Assura® MIDI Drainable Pouch

- EasiClose™ WIDE outlet
- **Filter**
- Soft cloth on front and back
- Not made with natural rubber latex

10½" (26½ cm) / 485 mL

Code	Color	HCPCS*
Opaque		
15954		A4427
15955		A4427
15956		A4427



Units: 10

2-Piece Assura®

Assura® MAXI Drainable Pouch

- EasiClose™ outlet
- **Filter**
- Soft cloth on back (and front of opaque)
- Not made with natural rubber latex

11½" (29½ cm) / 655 mL

Code	Code	Color	HCPCS*
Transparent	Opaque		
13974	13984		A4427
13975	13985		A4427
13976	13986		A4427



Units: 10

Assura® MIDI Drainable Pouch

- EasiClose™ outlet
- **Filter**
- Soft cloth on front and back
- Graphic pattern
- Not made with natural rubber latex

10½" (26½ cm) / 485 mL

Code	Color	HCPCS*
Opaque		
13964		A4427
13965		A4427
13966		A4427



Units: 10

Assura® MINI Drainable Pouch

- EasiClose™ outlet
- **Filter**
- Soft cloth on front and back
- Not made with natural rubber latex

9¼" (23½ cm) / 280 mL

Code	Color	HCPCS*
Opaque		
13924		A4427
13925		A4427



Units: 10

Welcome to Coloplast
p. 4-8

Supporting Products
p. 9-20

Irrigation
p. 21-22

2-Piece Click
p. 23-46

2-Piece Flex
p. 47-58

1-Piece
p. 59-92

Fistula/Wound Management
p. 93-94

Pediatric
p. 95-104

Services
p. 105-120






NOTE: Assura® is compatible with SenSura® Click, but NOT with SenSura® Mio Click.

Assura® MAXI Drainable Pouch

- Clamp closure
- **Without filter**
- Soft cloth on front and back
- Not made with natural rubber latex

11¼" (28½ cm) / 760 mL

Code	Color	HCPCS*
Opaque		
12577		A4426
12578		A4426
12579		A4426






Units: 10

Assura® MIDI Drainable Pouch

- Clamp closure
- **Without filter**
- Soft cloth on front and back
- Not made with natural rubber latex

9¾" (24½ cm) / 400 mL

Code	Color	HCPCS*
Opaque		
12527		A4426
12528		A4426
12529		A4426






Units: 10

Assura® High Output Drainable Pouch

- Soft outlet can connect to Coloplast's fistula drain bag #14010, or a drain bag with a standard connection
- **Filter**
- Soft cloth on back (and front of opaque)
- Not made with natural rubber latex

12½" (32 cm) / 750 mL

Code	Code	Color	HCPCS*
Transparent Opaque			
8114	NA		A4413
8115	2846		A4413
8116	2847		A4413






Units: 10

For bed drainage bag and bag hanger, see page 19.

Assura® MAXI Closed Pouch

- **Filter**
- Soft cloth on back (and front of opaque)
- Not made with natural rubber latex

8½" (21 cm) / 570 mL

Code	Code	Color	HCPCS*
Transparent Opaque			
12374	12384		A4423
12375	12385		A4423
12376	12386		A4423






Units: 30

Assura® MIDI Closed Pouch

- **Filter**
- Soft cloth on back (and front of opaque)
- Not made with natural rubber latex

7" (18 cm) / 275 mL

Code	Code	Color	HCPCS*
Transparent Opaque			
12344	12354		A4423
12345	12355		A4423
12346	12356		A4423






Units: 30

Ileostomy / Colostomy

Assura® Stoma Cap

- **Filter**
- Small size is optimal for intimate moments or colostomates who irrigate
- Not made with natural rubber latex

Code	Color	HCPCS*
Opaque		
2801		A5055
2802		A5055
2803		A5055**



Units: 30

*For important information regarding the use of HCPCS codes listed and code definitions see page 116

**Product has not been through PDAC verification



Urostomy

Assura® Urostomy Micro-Pouch

- Miniature size prevents twisting
- Soft outlet can be connected to a drain bag for nighttime use, or a leg bag for patients in a wheelchair
- Soft cloth on front
- Not made with natural rubber latex



6" (15 cm) Units: 10

Code	Color	HCPCS*
Transparent		
14204		A4433
14205		A4433
14206		A4433

For nighttime, use a urostomy night bag found on page 19.

Assura® Urostomy Minicap

- Ultra-absorbent material inside
- Small size is optimal for intimate use
- Not made with natural rubber latex



100 mL Units: 30

Code	Color	HCPCS*
Opaque		
2807		A5055
2808		A5055

Assura® MAXI Urostomy Pouch

- Multi-chambers minimize sloshing
- Soft outlet can be connected to urostomy night bag #21365 or any standard night or leg bag
- Soft cloth on back (and front of opaque)
- Not made with natural rubber latex



10½" (26½ cm) / 488 mL Units: 10

Code	Code	Color	HCPCS*
Transparent			
14227	14224		A4433
14228	14225		A4433
14229	14226		A4433

Assura® MAXI Urostomy Pouch

- Soft outlet can be connected to urostomy night bag #21365 or any standard night or leg bag
- Soft cloth on back (and front of opaque)
- Not made with natural rubber latex



10¾" (27¼ cm) / 375 mL Units: 10

Code	Code	Color	HCPCS*
Transparent			
1757	1754		A4433
1758	1755		A4433
1759	1756		A4433

Assura® MIDI Urostomy Pouch

- Soft outlet can be connected to urostomy night bag #21365 or any standard night bag
- Soft cloth on back
- Not made with natural rubber latex

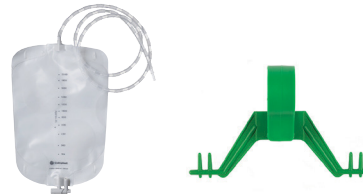


9½" (24 cm) / 150 mL Units: 10

Code	Color	HCPCS*
Transparent		
1751		A4433
1752		A4433

Urostomy Night Bag and Bag Hanger

See Supporting Products on page 19 for more information.



Supporting Products
p. 9-20

Irrigation
p. 21-22

2-Piece Click
p. 23-46

2-Piece Flex
p. 47-58

1-Piece
p. 59-92

Fistula/Wound Management
p. 93-94

Pediatric
p. 95-104

Services
p. 105-120



2-Piece Assura®

Assura® Standard Wear Barrier + Drainable Pouch Single Use Kit


- Barrier #2883 Flat with belt tabs
- Pouch #15976 MAXI / EasiClose™ WIDE outlet
- Instructions for use
- Stoma measuring guide
- Not made with natural rubber latex



Units: 5

Code	Stoma Size	Color	HCPCS*
------	------------	-------	--------

Cut-to-fit / Transparent

11002	⅜ - 2¼" (10-55 mm)		A4414, A4427
-------	--------------------	---	--------------

Assura® Standard Wear Barrier + Drainable Pouch Single Use Kit


- Barrier #14263 Convex Light with belt tabs
- Pouch #15976 MAXI / EasiClose™ WIDE outlet
- Instructions for use
- Stoma measuring guide
- Not made with natural rubber latex



Units: 5

Code	Stoma Size	Color	HCPCS*
------	------------	-------	--------

Cut-to-fit / Transparent

11001	⅜ - 1 ¹¹ / ₁₆ " (15-43 mm)		A4373, A4427
-------	--	---	--------------

 Indicates convexity

SenSura® Mio

Patients deserve proven leakage reduction¹ from the start

A multi-site US acute care study showed **SenSura® Mio users had 41% lower risk of leakage** compared to users of Hollister® CeraPlus™^{1**}

1. Based on a retrospective study conducted at 2 affiliated university hospitals; n=214 patient charts with surgery dates ranging from February 2022 to June 2023. Patient events were charted by the WOC nurse at each pouch change; review captured up to 5 pouch changes or 2 weeks of data. Statistical analysis controlled for key differences between sites and found predicted probability of leakage for SenSura Mio was 15.1% and Hollister® CeraPlus™ was 25.6%, corresponding to a 40.8% lower risk (p=0.011). Coloplast data on file.
**All trademarks are the property of their respective owners



Welcome to Coloplast
p. 4-8

Supporting Products
p. 9-20

Irrigation
p. 21-22

2-Piece Click
p. 23-46

2-Piece Flex
p. 47-58

1-Piece
p. 59-92

Fistula/Wound Management
p. 93-94

Pediatric
p. 95-104

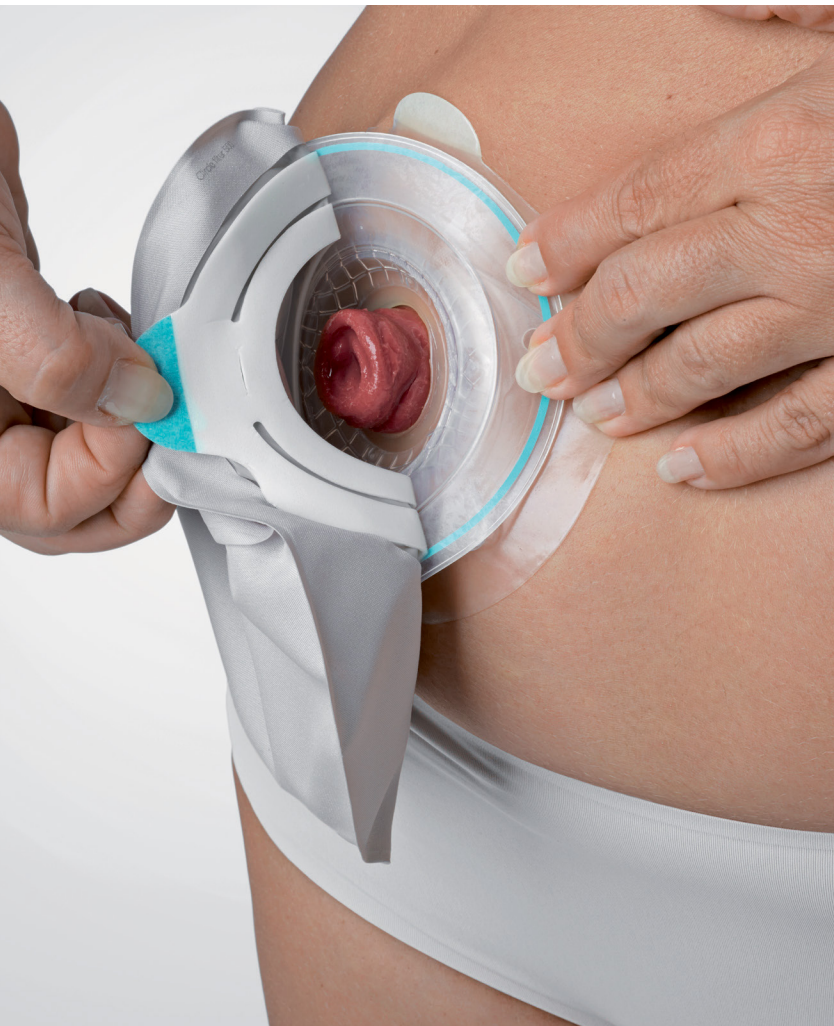
Services
p. 105-120



SenSura® Mio Flex

All the benefits of BodyFit Technology with a 2-piece adhesive coupling system

- The Flex coupling is a comfortable, flexible, low-profile 2-piece system
- The floating flange allows the pouch to be applied to the barrier with minimal pressure on the abdomen

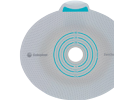


2-Piece SenSura® Mio Flex

NOTE: SenSura® Mio Flex and SenSura® Flex are compatible with one another

SenSura® Mio Flex Flat Barrier

- Extended wear
- Not made with natural rubber latex



Units: 5
18390** - 10 units

Code	Stoma Size	Color	HCPCS*
Cut-to-fit			
10551	3/8 - 1 5/16" (10-33 mm)	Green	A4409
10561	3/8 - 1 7/8" (10-48 mm)	Red	A4410
10571	3/8 - 2 1 1/16" (10-68 mm)	Yellow	A4410
18390**	3/8 - 3 1/2" (10-88 mm)	Dark Grey	A4410
Pre-cut			
10562	1" (25 mm)	Red	A4409
10566	1 1/8" (28 mm)	Red	A4409
10563	1 3/16" (30 mm)	Red	A4409
10567	1 1/4" (32 mm)	Red	A4409
10564	1 3/8" (35 mm)	Red	A4409
10568	1 1/2" (38 mm)	Red	A4409
10565	1 9/16" (40 mm)	Red	A4409
10572	1 3/4" (45 mm)	Yellow	A4410
10573	2" (50 mm)	Yellow	A4410

SenSura® Mio Flex Convex Soft Barrier

- Extended wear
- Belt tabs for use with 4237, 4247
- FlexShell is designed for stability and flexibility
- Not made with natural rubber latex



Units: 5

Code	Stoma Size	Color	HCPCS*
Cut-to-fit			
16880	3/8 - 3/4" (10-20 mm)	Green	A4408
16882	3/8 - 1 1/8" (15-30 mm)	Red	A4408
16886	3/8 - 1 5/8" (15-40 mm)	Red	A4408
16889	3/8 - 2 1/16" (15-53 mm)	Yellow	A4408
Pre-cut			
16881	1 1/16" (18 mm)	Green	A4408
16883	1 3/16" (21 mm)	Red	A4408
16884	1" (25 mm)	Red	A4408
16885	1 1/8" (28 mm)	Red	A4408
16887	1 1/4" (31 mm)	Red	A4408
16888	1 3/8" (35 mm)	Red	A4408
16890	1 1/2" (38 mm)	Yellow	A4408
16891	1 5/8" (41 mm)	Yellow	A4408

Convex soft

*For important information regarding the use of HCPCS codes listed and code definitions see page 116

Welcome to Coloplast
p. 4-8

Supporting Products
p. 9-20

Irrigation
p. 21-22

2-Piece Click
p. 23-46

2-Piece Flex
p. 47-58

1-Piece
p. 59-92

Fistula/Wound Management
p. 93-94

Pediatric
p. 95-104

Services
p. 105-120



2-Piece SenSura® Mio Flex

NOTE: SenSura® Mio Flex and SenSura® Flex are compatible with one another

SenSura® Mio Flex Convex Light Barrier

- Extended wear
- Belt tabs for use with 4237, 4247
- FlexShell is designed for stability and flexibility
- Not made with natural rubber latex



Units: 5

Code	Stoma Size	Color	HCPCS*
Cut-to-fit			
16471	⅜ - ¾" (10-20 mm)		A4407
16481	⅝ - 1⅜" (15-30 mm)		A4407
16483	⅝ - 1⅞" (15-40 mm)		A4407
16491	⅝ - 2⅜" (15-53 mm)		A4408
Pre-cut			
16472	1⅜" (18 mm)		A4407
16484	1⅜" (21 mm)		A4407
16485	1" (25 mm)		A4407
16486	1⅜" (28 mm)		A4407
16487	1⅜" (31 mm)		A4407
16488	1⅜" (35 mm)		A4407
16493	1½" (38 mm)		A4408
16494	1⅝" (41 mm)		A4408

SenSura® Mio Flex MAXI Drainable Pouch

- EasiClose™ WIDE outlet
- Full-circle filter
- Neutral gray, water-resistant textile
- Opaque includes inspection window
- Not made with natural rubber latex



Units: 10

Code	Code	Color	HCPCS*
11" (28 cm) / 655 mL			
Transparent			
NA	12262		A4425
12273	12272		A4425
12283	12282		A4425
18389	NA		A4425

2-Piece SenSura® Mio Flex

SenSura® Mio Flex MAXI Drainable Pouch

- EasiClose™ WIDE outlet
- Without filter
- Neutral gray, water-resistant textile
- Not made with natural rubber latex



Units: 10

Code	Color	HCPCS*
11" (28 cm) / 655 mL		
Transparent		
12274		A5063
12284		A5063

SenSura® Mio Flex MIDI Drainable Pouch

- EasiClose™ WIDE outlet
- Full-circle filter
- Neutral gray, water-resistant textile
- Inspection window
- Not made with natural rubber latex



Units: 10

Code	Color	HCPCS*
10 ¼" (26 cm) / 485 mL		
Opaque gray		
12281		A4425

SenSura® Mio Flex High Output Pouch with Tap Outlet

- Full-circle filter designed for ileostomy output
- Transparent pouches feature a printed scale for visual indication of output volume
- Opaque pouches feature a peek-a-boo inspection window and tuck-away option to keep the outlet from rubbing on the wearer's leg
- Wider-lumen outlet provides effective drainage for patients with thicker output; connects to Coloplast fistula drain bag #14010
- Not made with natural rubber latex



Code	Code	Color	HCPCS*
12 ½" (32 cm) / 1080 mL			
Transparent			
18655	18650		A4413
18656	18651		A4413

Welcome to Coloplast
p. 4-8

Supporting Products
p. 9-20

Irrigation
p. 21-22

2-Piece Click
p. 23-46

2-Piece Flex
p. 47-58

1-Piece
p. 59-92

Fistula/Wound Management
p. 93-94

Pediatric
p. 95-104

Services
p. 105-120



2-Piece SenSura® Mio Flex

NOTE: SenSura® Mio Flex and SenSura® Flex are compatible with one another

SenSura® Mio Flex High Output Pouch with Soft Outlet

- Full-circle filter designed for ileostomy output
- Transparent pouches feature a printed scale for visual indication of output volume
- Opaque includes inspection window
- Soft outlet provides effective drainage; connects to a standard drain bag or Coloplast fistula drain bag #14010
- Not made with natural rubber latex



12½" (32 cm) / 1080 mL

Units: 10

Code	Code	Color	HCPCS*
Transparent	Opaque gray		
18657	18652		A4413
18658	18653		A4413

SenSura® Mio Flex MAXI Closed Pouch

- Full-circle filter
- Neutral gray, water-resistant textile
- Opaque includes inspection window
- Not made with natural rubber latex



8¾" (20½ cm) / 570 mL

Units: 30

Code	Code	Color	HCPCS*
Transparent	Opaque gray		
12203	12202		A4419
12216	12213		A4419
12223	12222		A4419

SenSura® Mio Flex MAXI Urostomy Pouch

- Multi-chambers minimize sloshing
- Anti-reflux valves prevent urine from washing over the stoma
- Soft outlet can be connected to urostomy night bag #21365 or any standard night or leg bag
- Neutral gray, water-resistant textile
- Not made with natural rubber latex



10½" (27 cm) / 400 mL

Units: 10

Code	Code	Color	HCPCS*
Transparent	Opaque gray		
12292	12291		A5073**
12298	12297		A5073**

Convex light

2-Piece SenSura® Mio Flex

SenSura® Mio Flex MIDI Urostomy Pouch

- Multi-chambers minimize sloshing
- Anti-reflux valves prevent urine from washing over the stoma
- Soft outlet can be connected to urostomy night bag #21365 or any standard night or leg bag
- Neutral gray, water-resistant textile
- Not made with natural rubber latex



9½" (24 cm) / 330 mL

Units: 10

Code	Color	HCPCS*
Opaque gray		
12296		A5073**

SenSura® Mio Flex Barrier + MAXI Drainable Pouch Single Use Kit

- Extended wear
- Instructions for use
- Stoma measuring guide
- Not made with natural rubber latex



Units: 5

Code	Stoma Size	Color	HCPCS*
Cut-to-fit / Transparent			
21009	⅜ - 1⅞" (10-48 mm)		A4410, A4425
Barrier #10561 Flat, Pouch #12273 EasiClose™ WIDE outlet / filter			

21010	⅜ - 2¾" (10-68 mm)		A4410, A4425
Barrier #10571 Flat, Pouch #12283 EasiClose™ WIDE outlet / filter			

21012	⅜ - 1⅞" (10-48 mm)		A4410, A5063
Barrier #10561 Flat, Pouch #12274 EasiClose™ WIDE outlet / without filter			

21013	⅜ - 2¾" (10-68 mm)		A4410, A5063
Barrier #10571 Flat, Pouch #12284 EasiClose™ WIDE outlet / without filter			

SenSura® Mio Flex Convex Barrier + MAXI Drainable Pouch Single Use Kit

- Extended wear
- Instructions for use
- Stoma measuring guide
- Not made with natural rubber latex



Units: 5

Code	Stoma Size	Color	HCPCS*
Cut-to-fit / Transparent			
13660	⅝ - 1⅞" (15-40 mm)		A4407, A4425
Barrier #16483 Convex Light, Pouch #12273 EasiClose™ WIDE outlet / filter			

13661	⅝ - 2¼" (15-53 mm)		A4408, A4425
Barrier #16491 Convex Light, Pouch #12283 EasiClose™ WIDE outlet / filter			

*For important information regarding the use of HCPCS codes listed and code definitions see page 116

**Product has not been through PDAC verification

Welcome to Coloplast
p. 4-8

Supporting Products
p. 9-20

Irrigation
p. 21-22

2-Piece Click
p. 23-46

2-Piece Flex
p. 47-58

1-Piece
p. 59-92

Fistula/Wound Management
p. 93-94

Pediatric
p. 95-104

Services
p. 105-120



NOTE: SenSura® Mio Flex and SenSura® Flex are compatible with one another

SenSura® Mio Flex + MAXI Urostomy Pouch Single Use Kit

- Extended wear
- Urostomy adapter
- Instructions for use
- Stoma measuring guide
- Not made with natural rubber latex



Units: 5

Code	Stoma Size	Color	HCPCS*
------	------------	-------	--------

Cut-to-fit / Transparent

110072	⅔ - 1⅞" (10-48 mm)		A4410, A5073**
Barrier #10561 Flat, Pouch #12298 Soft outlet / multi-chamber			

SenSura® Mio Flex Convex + MAXI Urostomy Pouch Single Use Kit

- Extended wear
- Urostomy adapter
- Instructions for use
- Stoma measuring guide
- Not made with natural rubber latex



Units: 5

Code	Stoma Size	Color	HCPCS*
------	------------	-------	--------

Cut-to-fit / Transparent

13662	⅝ - 1⅞" (15-40 mm)		A4407, A5073**
Barrier #16483 Convex, Pouch #12298 Soft outlet / multi-chamber			

SenSura® Flex Flat Barrier

- Standard wear
- Not made with natural rubber latex



Units: 10
10108** - 5 units

Code	Stoma Size	Color	HCPCS*
------	------------	-------	--------

Cut-to-fit

10101	⅔ - 1⅞" (10-33 mm)		A4414
10102	⅔ - 1⅞" (10-48 mm)		A4414
10103	⅔ - 2¾" (10-68 mm)		A4415
10108**	⅔ - 3½" (10-88 mm)		A4415

SenSura® Flex Xpro Flat Barrier

- Extended wear
- Not made with natural rubber latex



Units: 10

Code	Stoma Size	Color	HCPCS*
------	------------	-------	--------

Cut-to-fit

10104	⅔ - 1⅞" (10-33 mm)		A4409
10105	⅔ - 1⅞" (10-48 mm)		A4409
10106	⅔ - 2¾" (10-68 mm)		A4410

SenSura® Flex Convex Light Barrier

- Standard wear
- Belt tabs for use with 4215, 4220
- Not made with natural rubber latex



Units: 5

Code	Stoma Size	Color	HCPCS*
------	------------	-------	--------

Cut-to-fit

11301	⅝ - 1⅞" (15-23 mm)		A4373
11302	⅝ - 1⅞" (15-33 mm)		A4373
11303	⅝ - 1⅞" (15-43 mm)		A4373
11307	⅝ - 2⅞" (15-53 mm)		A4373

Pre-cut

11312	⅞" (22 mm)		A4373
11313	1" (25 mm)		A4373
11314	1⅜" (28 mm)		A4373
11315	1⅞" (31 mm)		A4373

SenSura® Flex Xpro Convex Light Barrier

- Extended wear
- Belt tabs for use with 4215, 4220
- Not made with natural rubber latex



Units: 5

Code	Stoma Size	Color	HCPCS*
------	------------	-------	--------

Cut-to-fit

11304	⅝ - 1⅞" (15-23 mm)		A4407
11305	⅝ - 1⅞" (15-33 mm)		A4407
11306	⅝ - 1⅞" (15-43 mm)		A4407
11308	⅝ - 2⅞" (15-53 mm)		A4408

Indicates convexity

*For important information regarding the use of HCPCS codes listed and code definitions see page 116



2-Piece SenSura® Flex

NOTE: SenSura® Mio Flex and SenSura® Flex are compatible with one another

SenSura® Flex MAXI Drainable Pouch

- EasiClose™ WIDE outlet
- **Filter**
- Soft cloth on back (and front of opaque)
- Not made with natural rubber latex



11½" (29½ cm) / 655 mL		Units: 20	
Code	Code	Color	HCPCS*
Transparent	Opaque		
NA	11514		A4425
11512	11515		A4425
11517	11518		A4425
11½" (29½cm) / 750 mL XXL pouch		Units: 20	
11590	11591		A4425

SenSura® Flex MAXI Drainable Pouch

- EasiClose™ WIDE outlet
- **Without filter**
- Soft cloth on back
- Transparent
- Not made with natural rubber latex



11½" (29½ cm) / 655 mL		Units: 20	
Code	Code	Color	HCPCS*
11612			A5063
11½" (29½cm) / 750 mL XXL pouch		Units: 20	
11690			A5063

SenSura® Flex MAXI Closed Pouch

- **Filter**
- Soft cloth on back (and front of opaque)
- Not made with natural rubber latex



8½" (21 cm) / 570 mL		Units: 30	
Code	Code	Color	HCPCS*
Transparent	Opaque		
10911	10914		A4419
10912	10915		A4419
10917	10918		A4419

2-Piece SenSura® Flex

SenSura® Flex Standard Wear Barrier + MAXI Drainable Pouch Single Use Kit

- Instructions for use
- Stoma measuring guide
- Not made with natural rubber latex



Units: 5

Code	Stoma Size	Color	HCPCS*
Cut-to-fit / Transparent			
11011K	⅔ - 1⅞" (10-48 mm)		A4414, A4425
Barrier #10102 Flat, Pouch #11512 EasiClose™ WIDE outlet / filter			
21001	⅔ - 2¾" (10-68 mm)		A4415, A4425
Barrier #10103 Flat, Pouch #11517 EasiClose™ WIDE outlet / filter			
21011	⅔ - 3½" (10-88 mm)		A4415, A5063
Barrier #10108 Flat, Pouch #11690 EasiClose™ WIDE outlet / without filter			

SenSura® Flex Xpro Extended Wear Barrier + MAXI Drainable Pouch Single Use Kit

- Instructions for use
- Stoma measuring guide
- Not made with natural rubber latex



Units: 5

Code	Stoma Size	Color	HCPCS*
Cut-to-fit / Transparent			
21002	⅔ - 1⅞" (10-48 mm)		A4409, A4425
Barrier #10105 Flat, Pouch #11512 EasiClose™ WIDE outlet / filter			
21003	⅔ - 2¾" (10-68 mm)		A4410, A4425
Barrier #10106 Flat, Pouch #11517 EasiClose™ WIDE outlet / filter			

SenSura® Flex Xpro Extended Wear Barrier + MAXI Drainable Pouch Single Use Kit

- Instructions for use
- Stoma measuring guide
- Not made with natural rubber latex



Units: 5

Code	Stoma Size	Color	HCPCS*
Cut-to-fit / Transparent			
21004	⅝ - 2¼" (15-53 mm)		A4408, A4425
Barrier #11308 Convex Light, Pouch #11517 EasiClose™ WIDE outlet / filter			

Welcome to Coloplast
p. 4-8

Supporting Products
p. 9-20

Irrigation
p. 21-22

2-Piece Click
p. 23-46

2-Piece Flex
p. 47-58

1-Piece
p. 59-92

Fistula/Wound Management
p. 93-94

Pediatric
p. 95-104

Services
p. 105-120



SenSura® Mio

Because every fit matters

Finding the right fit isn't always easy. But it's essential to help reduce leakage and skin complications.

SenSura® Mio with BodyFit Technology provides secure body contact for protection and a flexible fit during movement.



Walton
SenSura® Mio
user



Rosemary
SenSura® Mio &
Brava® user

SenSura® Mio in black

One new color.
One million possibilities.

Having a choice of color for their ostomy pouch reduces the emotional burden of living with an ostomy¹

Give your patients the power of choice

1. VoxBio study, 2021, Coloplast Market research, Data on file.

Welcome to Coloplast
p. 4-8

Supporting Products
p. 9-20

Irrigation
p. 21-22

2-Piece Click
p. 23-46

2-Piece Flex
p. 47-58

1-Piece
p. 59-92

Fistula/Wound Management
p. 93-94

Pediatric
p. 95-104

Services
p. 105-120



SenSura[®] Mio 1-Piece

All the benefits of BodyFit
Technology in a flexible low-
profile 1-piece system

- 1-piece products have no coupling; the pouch and barrier are welded together as one piece



1-Piece SenSura[®] Mio

SenSura[®] Mio Flat MAXI Drainable Pouch

- Extended wear
- EasiClose™ WIDE outlet
- Full-circle filter
- Water-resistant textile on back
- Opaque pouches available in neutral gray or black textile
- Opaque includes inspection window
- Not made with natural rubber latex



11" (28 cm) / 655 mL

Units: 10

Code	Code	Code	Cut	Stoma Size	HCPCS*
Transparent	Opaque gray	Opaque black			
10481	10471	18777	Cut-to-fit	3/8" - 2 1/8" (10-55 mm)	A5056
18382	NA	NA	Cut-to-fit	3/8" - 2 3/4" (10-70 mm)	A5056
18383	NA	NA	Cut-to-fit	3/8" - 4" (10-100 mm)	A5056
10482	10472	NA	Pre-cut	1" (25 mm)	A5056
10488	10473	NA	Pre-cut	1 1/8" (28 mm)	A5056
10483	10474	NA	Pre-cut	1 3/16" (30 mm)	A5056
10490	10475	NA	Pre-cut	1 1/4" (32 mm)	A5056
10484	10476	NA	Pre-cut	1 3/8" (35 mm)	A5056
10491	10480	NA	Pre-cut	1 1/2" (38 mm)	A5056
10487	10479	NA	Pre-cut	1 9/16" (40 mm)	A5056
10485	10477	NA	Pre-cut	1 3/4" (45 mm)	A5056
10486	10478	NA	Pre-cut	2" (50 mm)	A5056

SenSura[®] Mio Flat MIDI Drainable Pouch

- Extended wear
- EasiClose™ WIDE outlet
- Full-circle filter
- Peek-a-boo inspection window allows easy application
- Water-resistant textile on back
- Opaque pouches available in neutral gray or black textile
- Not made with natural rubber latex



10 3/4" (26 cm) / 485 mL

Units: 10

Code	Code	Cut	Stoma Size	HCPCS*
Opaque gray	Opaque black			
10461	18776	Cut-to-fit	3/8" - 1 3/4" (10-45 mm)	A5056

*For important information regarding the use of HCPCS codes listed and code definitions see page 116

Welcome to Coloplast
p. 4-8

Supporting Products
p. 9-20

Irrigation
p. 21-22

2-Piece Click
p. 23-46

2-Piece Flex
p. 47-58

1-Piece
p. 59-92

Fistula/Wound Management
p. 93-94

Pediatric
p. 95-104

Services
p. 105-120



SenSura® Mio Flat MAXI Drainable Pouch

- Extended wear
- EasiClose™ WIDE outlet
- **Without filter**
- Water-resistant textile on back
- Not made with natural rubber latex



Transparent 11" (28 cm) / 655 mL

Units: 10

Code	Cut	Stoma Size	HCPCS*
10489	Cut-to-fit	3/8 - 2 1/8" (10-55 mm)	A4388
10492	Pre-cut	1" (25 mm)	A4388
10493	Pre-cut	1 1/8" (28 mm)	A4388
10494	Pre-cut	1 1/4" (32 mm)	A4388
10495	Pre-cut	1 3/8" (35 mm)	A4388
10496	Pre-cut	1 1/2" (38 mm)	A4388

SenSura® Mio Convex Soft MAXI Drainable Pouch

- Extended wear
- Belt tabs for use with 4237, 4247
- EasiClose™ WIDE outlet
- FlexShell is designed for stability and flexibility
- **Full-circle filter**
- Water-resistant textile on back
- Opaque pouches available in neutral gray or black textile
- Opaque includes inspection window
- Not made with natural rubber latex



11" (28 cm) / 655 mL

Units: 10

Code	Code	Code	Cut	Stoma Size	HCPCS*
Transparent	Opaque gray	Opaque black			
16715	16705	18990	Cut-to-fit	5/8 - 1 5/16" (15-33 mm)	A5057
16716	16706	18991	Cut-to-fit	3/8 - 2" (10-50 mm)	A5057
NA	13671	NA	Pre-cut	7/8" (21 mm)	A5057
NA	13672	NA	Pre-cut	1" (25 mm)	A5057
NA	13673	NA	Pre-cut	1 1/8" (28 mm)	A5057
NA	13674	NA	Pre-cut	1 1/4" (31 mm)	A5057
NA	13675	NA	Pre-cut	1 3/8" (35 mm)	A5057
NA	13676	NA	Pre-cut	1 1/2" (38 mm)	A5057

Convex soft Convex light

SenSura® Mio Convex Light MAXI Drainable Pouch

- Extended wear
- Belt tabs for use with 4237, 4247
- EasiClose™ WIDE outlet
- FlexShell is designed for stability and flexibility
- **Full-circle filter**
- Water-resistant textile on back
- Opaque pouches available in neutral gray or black textile
- Opaque includes inspection window
- Not made with natural rubber latex



11" (28 cm) / 655 mL

Units: 10

Code	Code	Code	Cut	Stoma Size	HCPCS*
Transparent	Opaque gray	Opaque black			
16737	16725	18987	Cut-to-fit	3/8 - 7/8" (10-23 mm)	A5057
16738	16726	18988	Cut-to-fit	5/8 - 1 5/16" (15-33 mm)	A5057
16739	16733	18989	Cut-to-fit	3/8 - 1 11/16" (10-43 mm)	A5057
16740	16730	NA	Pre-cut	1 3/16" (21 mm)	A5057
16741	16731	NA	Pre-cut	1" (25 mm)	A5057
16742	16732	NA	Pre-cut	1 1/8" (28 mm)	A5057
NA	16727	NA	Pre-cut	1 1/4" (31 mm)	A5057
NA	16734	NA	Pre-cut	1 3/8" (35 mm)	A5057
NA	16735	NA	Pre-cut	1 1/2" (38 mm)	A5057

SenSura® Mio Convex Light MAXI Drainable Pouch

- Extended wear
- Belt tabs for use with 4237, 4247
- EasiClose™ WIDE outlet
- FlexShell is designed for stability and flexibility
- **Without filter**
- Neutral gray, water-resistant textile
- Opaque includes inspection window
- Not made with natural rubber latex



Transparent 11" (28 cm) / 655 mL

Units: 10

Code	Cut	Stoma Size	HCPCS*
16748	Cut-to-fit	3/8 - 1 11/16" (10-43 mm)	A4390

*For important information regarding the use of HCPCS codes listed and code definitions see page 116

Supporting Products
p. 9-20

Irrigation
p. 21-22

2-Piece Click
p. 23-46

2-Piece Flex
p. 47-58

1-Piece
p. 59-92

Fistula/Wound Management
p. 93-94

Pediatric
p. 95-104

Services
p. 105-120



SenSura® Mio Convex Deep MAXI Drainable Pouch

- Extended wear
- Belt tabs for use with 4237, 4247
- EasiClose™ WIDE outlet
- FlexShell is designed for stability and flexibility
- **Full-circle filter**
- Water-resistant textile on back
- Opaque pouches available in neutral gray or black textile
- Opaque includes inspection window
- Not made with natural rubber latex



11" (28cm) / 655 mL					Units: 10
Code	Code	Code	Cut	Stoma Size	HCPCS*
Transparent	Opaque gray	Opaque black			
16765	16755	18984	Cut-to-fit	3/8 - 7/8" (10-23 mm)	A5057
16766	16756	18985	Cut-to-fit	5/8 - 1 5/16" (15-33 mm)	A5057
16767	16768	18986	Cut-to-fit	3/8 - 1 11/16" (10-43 mm)	A5057
16770	16760	NA	Pre-cut	1 3/16" (21 mm)	A5057
16771	16761	NA	Pre-cut	1" (25 mm)	A5057
16772	16762	NA	Pre-cut	1 1/8" (28 mm)	A5057
16773	16757	NA	Pre-cut	1 1/4" (31 mm)	A5057
NA	16763	NA	Pre-cut	1 3/8" (35 mm)	A5057
NA	16764	NA	Pre-cut	1 1/2" (38 mm)	A5057

SenSura® Mio Convex Deep MAXI Drainable Pouch

- Extended wear
- Belt tabs for use with 4237, 4247
- EasiClose™ WIDE outlet
- FlexShell is designed for stability and flexibility
- **Without filter**
- Neutral gray, water-resistant textile
- Not made with natural rubber latex



Transparent 11" (28 cm) / 655 mL				Units: 10
Code	Cut	Stoma Size	HCPCS*	
16778	Cut-to-fit	3/8 - 1 11/16" (10-43 mm)	A4390	

SenSura® Mio Convex Flip MAXI Drainable Pouch

- Extended wear
- Designed for curves, bulges and hernias
- Curved, star-shaped barrier conforms to outward areas with less creasing and folding
- "Flip to fit" design allows for easy application
- Opaque pouches feature a peek-a-boo inspection window for easy application
- **Full-circle filter**
- Not made with natural rubber latex



11" (28 cm) / 655 mL						Units: 10
Code	Code	Cut	Stoma Size	Max Cut	HCPCS*	
Transparent	Opaque gray					
18305	NA	Cut-to-fit	3/8 - 1 9/16" (10-40 mm)	1 9/16" (40 mm)	A5057	
18321	18312	Cut-to-fit	3/8 - 2" (10-50 mm)	2" (50 mm)	A5057	
18341	18330	Cut-to-fit	3/8 - 2 3/8" (10-60 mm)	2 3/8" (60 mm)	A5057	
NA	18301	Pre-cut	1" (25 mm)	1 9/16" (40 mm)	A5057	
NA	18302	Pre-cut	1 3/16" (30 mm)	1 9/16" (40 mm)	A5057	
18322	18313	Pre-cut	1" (25 mm)	2" (50 mm)	A5057	
18323	18314	Pre-cut	1 3/16" (30 mm)	2" (50 mm)	A5057	
18324	18315	Pre-cut	1 3/8" (35 mm)	2" (50 mm)	A5057	
18342	18331	Pre-cut	1 9/16" (40 mm)	2 3/8" (60 mm)	A5057	
18343	18332	Pre-cut	1 3/4" (45 mm)	2 3/8" (60 mm)	A5057	
18344	18333	Pre-cut	2" (50 mm)	2 3/8" (60 mm)	A5057	

SenSura® Mio Convex Flip MAXI Drainable Pouch

- Extended wear
- **Without filter**
- Designed for curves, bulges and hernias
- Curved, star-shaped barrier conforms to outward areas with less creasing and folding
- "Flip to fit" design allows for easy application
- Not made with natural rubber latex



Transparent 11" (28 cm) / 655 mL					Units: 10
Code	Cut	Stoma Size	Max Cut	HCPCS*	
18320	Cut-to-fit	3/8 - 2" (10-50 mm)	2" (50 mm)	A4390	
18340	Cut-to-fit	3/8 - 2 3/8" (10-60 mm)	2 3/8" (60 mm)	A4390	

Supporting Products
p. 9-20

Irrigation
p. 21-22

2-Piece Click
p. 23-46

2-Piece Flex
p. 47-58

1-Piece
p. 59-92

Fistula/Wound Management
p. 93-94

Pediatric
p. 95-104

Services
p. 105-120



1-Piece SenSura® Mio

SenSura® Mio MAXI Drainable Pouch with Soft Outlet

- Extended wear
- **Full-circle filter designed for ileostomy output**
- Transparent pouches feature a printed scale for visual indication of output volume
- Opaque pouches feature a peek-a-boo inspection window and tuck-away option to keep the outlet from rubbing on the wearer's leg
- Soft outlet can connect to Coloplast's fistula drain bag #14010, or most standard night bags
- Not made with natural rubber latex



11" (28 cm) / 630 mL Units: 10

Code	Code	Cut	Stoma Size	HCPCS*
Transparent	Opaque gray			
18665	18660	Cut-to-fit	3/8 - 2 3/4" (10-70 mm)	A5056
18666	18661	Cut-to-fit	3/8 - 4" (10-100 mm)	A5056

Code	Code	Cut	Stoma Size	HCPCS*
Transparent	Opaque gray			
18665	18660	Cut-to-fit	3/8 - 2 3/4" (10-70 mm)	A5056
18666	18661	Cut-to-fit	3/8 - 4" (10-100 mm)	A5056

SenSura® Mio Convex Soft MAXI Drainable Pouch with Soft Outlet

- Extended wear
- Belt tabs for use with 4237, 4247
- **Full-circle filter designed for ileostomy output**
- Transparent pouches feature a printed scale
- Opaque pouches feature a peek-a-boo inspection window and tuck-away option to keep the outlet from rubbing on the wearer's leg
- Soft outlet can connect to Coloplast's fistula drain bag #14010, or any standard night bag
- Not made with natural rubber latex



11" (28 cm) / 630 mL Units: 10

Code	Code	Cut	Stoma Size	HCPCS*
Transparent	Opaque gray			
18671	18670	Cut-to-fit	3/8 - 2" (10-50 mm)	A5057

Code	Code	Cut	Stoma Size	HCPCS*
Transparent	Opaque gray			
18671	18670	Cut-to-fit	3/8 - 2" (10-50 mm)	A5057

SenSura® Mio Convex Light MAXI Drainable Pouch with Soft Outlet

- Extended wear
- Belt tabs for use with 4237, 4247
- **Full-circle filter designed for ileostomy output**
- Transparent pouches feature a printed scale
- Opaque pouches feature a peek-a-boo window and tuck-away option to keep the outlet from rubbing on the wearer's leg
- Soft outlet can connect to Coloplast's fistula drain bag #14010, or any standard night bag
- Not made with natural rubber latex



11" (28 cm) / 630 mL Units: 10

Code	Code	Cut	Stoma Size	HCPCS*
Transparent	Opaque gray			
18676	18675	Cut-to-fit	3/8 - 1 11/16" (10-43 mm)	A5057

Code	Code	Cut	Stoma Size	HCPCS*
Transparent	Opaque gray			
18676	18675	Cut-to-fit	3/8 - 1 11/16" (10-43 mm)	A5057

Convex soft Convex light

1-Piece SenSura® Mio

SenSura® Mio 1-Piece Post Op Pouch with Window

- Neutral gray, water-resistant textile
- Printed scale provides visual indication of output volume
- Easy-to-open and close post-op window attached to pouch
- Soft outlet can connect to Coloplast's fistula drain bag #14010, or a drain bag with a standard connection
- Not made with natural rubber latex



Transparent Units: 5

Code	Code	Cut	Volume	Stoma Size
Non-sterile	Sterile			
18690	18680	Cut-to-fit	680 mL	3/8 - 2 3/4" (10-70 mm)
18691	18681	Cut-to-fit	725 mL	3/8 - 4" (10-100 mm)

Code	Code	Cut	Volume	Stoma Size
Non-sterile	Sterile			
18690	18680	Cut-to-fit	680 mL	3/8 - 2 3/4" (10-70 mm)
18691	18681	Cut-to-fit	725 mL	3/8 - 4" (10-100 mm)

SenSura® Mio Flat MAXI Closed Pouch

- **Full-circle filter**
- Neutral gray, water-resistant textile
- Peek-a-boo inspection window allows easy application
- Not made with natural rubber latex



Opaque gray 8 1/4" (21 cm) / 550 mL Units: 30

Code	Cut	Stoma Size	HCPCS*
10881	Cut-to-fit	5/8 - 1 3/4" (15-45 mm)	A4416
10885**	Cut-to-fit	1 9/16 - 2 1/8" (40-55 mm)	A4416
10883	Pre-cut	1 3/16" (30 mm)	A4416
10884	Pre-cut	1 3/8" (35 mm)	A4416
10885**	Pre-cut	1 9/16" (40 mm)	A4416

Code	Cut	Stoma Size	HCPCS*
10881	Cut-to-fit	5/8 - 1 3/4" (15-45 mm)	A4416
10885**	Cut-to-fit	1 9/16 - 2 1/8" (40-55 mm)	A4416
10883	Pre-cut	1 3/16" (30 mm)	A4416
10884	Pre-cut	1 3/8" (35 mm)	A4416
10885**	Pre-cut	1 9/16" (40 mm)	A4416

**Because of its larger starter hole, 10885 functions as both a pre-cut and cut-to-fit solution.

SenSura® Mio Flat MIDI Closed Pouch

- **Full-circle filter**
- Neutral gray, water-resistant textile
- Peek-a-boo inspection window allows easy application
- Not made with natural rubber latex



Opaque gray 7 1/4" (19 cm) / 340 mL Units: 30

Code	Cut	Stoma Size	HCPCS*
10871	Cut-to-fit	5/8 - 1 3/4" (15-45 mm)	A4416
10872	Pre-cut	1" (25 mm)	A4416
10873	Pre-cut	1 3/16" (30 mm)	A4416
10874	Pre-cut	1 3/8" (35 mm)	A4416

Code	Cut	Stoma Size	HCPCS*
10871	Cut-to-fit	5/8 - 1 3/4" (15-45 mm)	A4416
10872	Pre-cut	1" (25 mm)	A4416
10873	Pre-cut	1 3/16" (30 mm)	A4416
10874	Pre-cut	1 3/8" (35 mm)	A4416

Welcome to Coloplast
p. 4-8

Supporting Products
p. 9-20

Irrigation
p. 21-22

2-Piece Click
p. 23-46

2-Piece Flex
p. 47-58

1-Piece
p. 59-92

Fistula/Wound Management
p. 93-94

Pediatric
p. 95-104

Services
p. 105-120

*For important information regarding the use of HCPCS codes listed and code definitions see page 116



SenSura® Mio MINI Closed Pouch

- Full-circle filter
- Neutral gray, water-resistant textile
- Peek-a-boo inspection window allows easy application
- Comfortable and discreet stoma cap alternative
- Not made with natural rubber latex



Opaque gray 5¼" (13 cm) / 110 mL

Units: 30

Code	Cut	Stoma Size	HCPCS*
10870	Cut-to-fit	5/8 - 1 3/4" (15-45 mm)	A4416

SenSura® Mio Convex Soft MAXI Closed Pouch

- Belt tabs for use with 4237, 4247
- FlexShell is designed for stability and flexibility
- Full-circle filter
- Neutral gray, water-resistant textile
- Opaque pouches feature peek-a-boo-inspection window for easy application
- Not made with natural rubber latex



8¼" (21 cm) / 550 mL

Units: 10

Code	Code	Cut	Stoma Size	HCPCS*
------	------	-----	------------	--------

Transparent Opaque gray

NA	16305	Cut-to-fit	5/8 - 1 5/16" (15-33 mm)	A4417
16315	16306	Cut-to-fit	3/8 - 2" (10-50 mm)	A4417
NA	16310	Pre-cut	1" (25 mm)	A4417
NA	16311	Pre-cut	1 1/8" (28 mm)	A4417
NA	16312	Pre-cut	1 1/4" (31 mm)	A4417
NA	16313	Pre-cut	1 3/8" (35 mm)	A4417

SenSura® Mio Convex Soft MIDI Closed Pouch

- Belt tabs for use with 4237, 4247
- FlexShell is designed for stability and flexibility
- Full-circle filter
- Neutral gray, water-resistant textile
- Opaque includes inspection window
- Not made with natural rubber latex



Opaque gray 7¼" (19 cm) / 340 mL

Units: 10

Code	Cut	Stoma Size	HCPCS*
16301	Cut-to-fit	5/8 - 1 5/16" (15-33 mm)	A4417

SenSura® Mio Convex Light MAXI Closed Pouch

- Belt tabs for use with 4237, 4247
- FlexShell is designed for stability and flexibility
- Full-circle filter
- Neutral gray, water-resistant textile
- Opaque includes inspection window
- Not made with natural rubber latex



8¼" (21 cm) / 550 mL

Units: 10

Code	Code	Cut	Stoma Size	HCPCS*
------	------	-----	------------	--------

Transparent Opaque gray

NA	16325	Cut-to-fit	3/8 - 7/8" (10-22 mm)	A4417
16335	NA	Cut-to-fit	3/8 - 1 1/16" (10-43 mm)	A4417
NA	16326	Cut-to-fit	5/8 - 1 5/16" (15-33 mm)	A4417
NA	16330	Pre-cut	1" (25 mm)	A4417
NA	16331	Pre-cut	1 1/8" (28 mm)	A4417
NA	16327	Pre-cut	1 1/4" (31 mm)	A4417
NA	16333	Pre-cut	1 3/8" (35 mm)	A4417
NA	16334	Pre-cut	1 1/2" (38 mm)	A4417

SenSura® Mio Convex Light MIDI Closed Pouch

- Belt tabs for use with 4237, 4247
- FlexShell is designed for stability and flexibility
- Full-circle filter
- Neutral gray, water-resistant textile
- Opaque includes inspection window
- Not made with natural rubber latex



Opaque gray 7¼" (19 cm) / 340 mL

Units: 10

Code	Cut	Stoma Size	HCPCS*
------	-----	------------	--------

16321	Cut-to-fit	3/8 - 7/8" (10-22 mm)	A4417
16322	Cut-to-fit	5/8 - 1 5/16" (15-33 mm)	A4417
16323**	Cut-to-fit / Pre-cut	1 1/4 - 1 11/16" (31-43 mm)	A4417

**Because of its larger starter hole, 16323 functions as both a pre-cut and cut-to-fit solution.

Supporting Products
p. 9-20

Irrigation
p. 21-22

2-Piece Click
p. 23-46

2-Piece Flex
p. 47-58

1-Piece
p. 59-92

Fistula/Wound Management
p. 93-94

Pediatric
p. 95-104

Services
p. 105-120



SenSura® Mio Convex Deep MAXI Closed Pouch 

- Belt tabs for use with 4237, 4247
- FlexShell is designed for stability and flexibility
- **Full-circle filter**
- Neutral gray, water-resistant textile
- Opaque includes inspection window
- Not made with natural rubber latex



8¾" (21 cm) / 550 mL Units: 10

Code	Code	Cut	Stoma Size	HCPSCS*
Transparent		Opaque gray		
NA	16345	Cut-to-fit	¾ - 7/8" (10-22 mm)	A4417
16355	NA	Cut-to-fit	¾ - 1 1/16" (10-43 mm)	A4417
NA	16346	Cut-to-fit	5/8 - 1 5/16" (15-33 mm)	A4417
NA	16350	Pre-cut	1" (25 mm)	A4417
NA	16351	Pre-cut	1 1/8" (28 mm)	A4417
NA	16347	Pre-cut	1 1/4" (31 mm)	A4417
NA	16353	Pre-cut	1 3/8" (35 mm)	A4417
NA	16354	Pre-cut	1 1/2" (38 mm)	A4417

SenSura® Mio Convex Deep MIDI Closed Pouch 

- Belt tabs for use with 4237, 4247
- FlexShell is designed for stability and flexibility
- **Full-circle filter**
- Neutral gray, water-resistant textile
- Opaque includes inspection window
- Not made with natural rubber latex



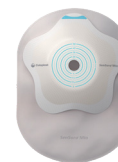
Opaque gray 7¾" (19 cm) / 340 mL Units: 10

Code	Cut	Stoma Size	HCPSCS*
16341	Cut-to-fit	¾ - 7/8" (10-22 mm)	A4417
16342	Cut-to-fit	5/8 - 1 5/16" (15-33 mm)	A4417
16343**	Cut-to-fit / Pre-cut	1 1/4 - 1 11/16" (31-43 mm)	A4417

**Because of its larger starter hole, 16343 functions as both a pre-cut and cut-to-fit solution.

SenSura® Mio Convex Flip MAXI Closed Pouch 

- **Full-circle filter**
- Designed for curves, bulges and hernias
- Curved, star-shaped barrier conforms to outward areas with less creasing and folding
- "Flip to fit" design allows for easy application
- Peek-a-boo inspection window for easy application
- Not made with natural rubber latex



Opaque gray 8¾" (21 cm) / 550 mL Units: 10

Code	Cut	Stoma Size	Max Cut	HCPSCS*
18152	Cut-to-fit	¾ - 1 9/16" (10-40 mm)	1 9/16" (40 mm)	A4417
18170	Cut-to-fit	¾ - 2" (10-50 mm)	2" (50 mm)	A4417
18171	Pre-cut	1" (25 mm)	2" (50 mm)	A4417
18172	Pre-cut	1 3/16" (30 mm)	2" (50 mm)	A4417
18173	Pre-cut	1 3/8" (35 mm)	2" (50 mm)	A4417
18180	Cut-to-fit	¾ - 2 3/8" (10-60 mm)	2 3/8" (60 mm)	A4417
18181	Pre-cut	1 9/16" (40 mm)	2 3/8" (60 mm)	A4417
18182	Pre-cut	1 3/4" (45 mm)	2 3/8" (60 mm)	A4417

Urostomy

SenSura® Mio Flat MAXI Urostomy Pouch

- Extended wear
- Multi-chambers minimize sloshing
- Anti-reflux valves prevent urine from washing over the stoma
- Soft outlet can be connected to urostomy night bag #21365 or any standard night or leg bag
- Neutral gray, water-resistant textile on back
- Not made with natural rubber latex



Transparent 10 1/2" (27 cm) / 400 mL Units: 10

Code	Cut	Stoma Size	HCPSCS*
10586	Cut-to-fit	¾ - 1 3/4" (10-45 mm)	A4391



SenSura® Mio Convex Soft MAXI Urostomy Pouch

- Extended wear
- Belt tabs for use with 4237, 4247
- FlexShell is designed for stability and flexibility
- Multi-chambers minimize sloshing
- Anti-reflux valves prevent urine from washing over the stoma
- Soft outlet can be connected to urostomy night bag #21365 or any standard night or leg bag
- Neutral gray, water-resistant textile
- Not made with natural rubber latex



10½" (27 cm) / 400 mL Units: 10

Code	Cut	Stoma Size	HCPCS*
Transparent	Opaque gray		
13679	16805	Cut-to-fit ¾ - 1½" (10-33 mm)	A4393
16810	NA	Cut-to-fit ¾ - 2" (10-50 mm)	A4393
13731	NA	Pre-cut 7/8" (21 mm)	A4393
13732	NA	Pre-cut 1" (25 mm)	A4393
13733	NA	Pre-cut 1 1/8" (28 mm)	A4393
13734	NA	Pre-cut 1 1/4" (31 mm)	A4393

SenSura® Mio Convex Soft MIDI Urostomy Pouch

- Extended wear
- Belt tabs for use with 4237, 4247
- FlexShell is designed for stability and flexibility
- Multi-chambers minimize sloshing
- Anti-reflux valves prevent urine from washing over the stoma
- Soft outlet can be connected to urostomy night bag #21365 or any standard night or leg bag
- Neutral gray, water-resistant textile
- Not made with natural rubber latex



Opaque gray 9½" (24 cm) / 330 mL Units: 10

Code	Cut	Stoma Size	HCPCS*
16801	Cut-to-fit	¾ - 1½" (10-33 mm)	A4393

SenSura® Mio Convex Light MAXI Urostomy Pouch

- Extended wear
- Belt tabs for use with 4237, 4247
- FlexShell is designed for stability and flexibility
- Multi-chambers minimize sloshing
- Anti-reflux valves prevent urine from washing over the stoma
- Soft outlet can be connected to urostomy night bag #21365 or any standard night or leg bag
- Neutral gray, water-resistant textile
- Not made with natural rubber latex



10½" (27 cm) / 400 mL Units: 10

Code	Code	Cut	Stoma Size	HCPCS*
Transparent	Opaque gray			
16835	16825	Cut-to-fit ¾ - 7/8" (10-22 mm)		A4393
16836	16826	Cut-to-fit 5/8 - 1 5/16" (15-33 mm)		A4393
16837	NA	Cut-to-fit ¾ - 1 11/16" (10-43 mm)		A4393
NA	16830	Pre-cut 11/16" (18 mm)		A4393
16840	16831	Pre-cut 1 3/16" (21 mm)		A4393
16841	16832	Pre-cut 1" (25 mm)		A4393
16842	16833	Pre-cut 1 1/8" (28 mm)		A4393
NA	16827	Pre-cut 1 1/4" (31 mm)		A4393

SenSura® Mio Convex Light MIDI Urostomy Pouch

- Extended wear
- Belt tabs for use with 4237, 4247
- FlexShell is designed for stability and flexibility
- Multi-chambers minimize sloshing
- Anti-reflux valves prevent urine from washing over the stoma
- Soft outlet can be connected to urostomy night bag #21365 or any standard night or leg bag
- Neutral gray, water-resistant textile
- Not made with natural rubber latex



Opaque gray 9½" (24 cm) / 330 mL Units: 10

Code	Cut	Stoma Size	HCPCS*
16821	Cut-to-fit	¾ - 7/8" (10-22 mm)	A4393
16822	Cut-to-fit	5/8 - 1 5/16" (15-33 mm)	A4393
16823	Pre-cut	1 1/4" (31 mm)	A4393

Supporting Products
p. 9-20

Irrigation
p. 21-22

2-Piece Click
p. 23-46

2-Piece Flex
p. 47-58

1-Piece
p. 59-92

Fistula/Wound Management
p. 93-94

Pediatric
p. 95-104

Services
p. 105-120



SenSura[®] Mio Convex Deep MAXI Urostomy Pouch

- Extended wear
- Belt tabs for use with 4237, 4247
- FlexShell is designed for stability and flexibility
- Multi-chambers minimize sloshing
- Anti-reflux valves prevent urine from washing over the stoma
- Soft outlet can be connected to urostomy night bag #21365 or any standard night or leg bag
- Neutral gray, water-resistant textile
- Not made with natural rubber latex



10½" (27 cm) / 400 mL Units: 10

Code	Code	Cut	Stoma Size	HCPCS*
Transparent		Opaque gray		
16865	16855	Cut-to-fit	¾ - 7/8" (10-22 mm)	A4393
16866	16856	Cut-to-fit	5/8 - 1 1/16" (15-33 mm)	A4393
16867	NA	Cut-to-fit	¾ - 1 11/16" (10-43 mm)	A4393
NA	16860	Pre-cut	1 1/16" (18 mm)	A4393
16870	16861	Pre-cut	1 3/16" (21 mm)	A4393
16871	16862	Pre-cut	1" (25 mm)	A4393
16872	16863	Pre-cut	1 1/8" (28 mm)	A4393
NA	16857	Pre-cut	1 1/4" (31 mm)	A4393

SenSura[®] Mio Convex Flip MAXI Urostomy Pouch

- Extended wear
- Designed for curves, bulges and hernias
- Curved, star-shaped barrier conforms to outward areas with less creasing and folding
- "Flip to fit" design allows for easy application
- Soft outlet can be connected to urostomy night bag #21365 or any standard night or leg bag
- Not made with natural rubber latex



10½" (27 cm) / 400 mL Units: 10

Code	Code	Cut	Stoma Size	Max Cut	HCPCS*
Transparent		Opaque gray			
18405	18401	Cut-to-fit	¾ - 1 9/16" (10-40 mm)	1 9/16" (40 mm)	A4393
NA	18402	Pre-cut	¾" (20 mm)	1 9/16" (40 mm)	A4393
NA	18403	Pre-cut	1" (25 mm)	1 9/16" (40 mm)	A4393
NA	18404	Pre-cut	1 3/16" (30 mm)	1 9/16" (40 mm)	A4393

- ◀ Convex soft
- ◀ Convex light
- ◀ Convex deep
- ★ Indicates Convex Flip

SenSura[®] Mio 1-Piece Single Use Kit

- Extended wear
- Pouch #10481 MAXI / EasiClose™ WIDE outlet
- Instructions for use
- Stoma measuring guide
- Not made with natural rubber latex



Code	Cut	Stoma Size	HCPCS*
Transparent Units: 5			
21007	Cut-to-fit	¾ - 2 1/8" (10-55 mm)	A5056

SenSura[®] Mio Convex Soft Single Use Kit

- Extended wear
- Pouch #16716 MAXI / EasiClose™ WIDE outlet / Filter
- Instructions for use
- Stoma measuring guide
- Not made with natural rubber latex



Code	Cut	Stoma Size	HCPCS*
Transparent Units: 5			
13665	Cut-to-fit	¾ - 2" (10-50 mm)	A5057

SenSura[®] Mio Convex Light Single Use Kit

- Extended wear
- Pouch #16739 MAXI / EasiClose™ WIDE outlet / Filter
- Instructions for use
- Stoma measuring guide
- Not made with natural rubber latex



Code	Cut	Stoma Size	HCPCS*
Transparent Units: 5			
13664	Cut-to-fit	¾ - 1 11/16" (10-43 mm)	A5057

SenSura[®] Mio Convex Light Urostomy Single Use Kit

- Extended wear
- Pouch #16837 MAXI / EasiClose™ WIDE outlet / Filter
- Instructions for use
- Stoma measuring guide
- Urostomy adapter
- Not made with natural rubber latex



Code	Cut	Stoma Size	HCPCS*
Transparent Units: 5			
13663	Cut-to-fit	¾ - 1 11/16" (10-43 mm)	A4393

Supporting Products
p. 9-20

Irrigation
p. 21-22

2-Piece Click
p. 23-46

2-Piece Flex
p. 47-58

1-Piece
p. 59-92

Fistula/Wound Management
p. 93-94

Pediatric
p. 95-104

Services
p. 105-120



SenSura® Flat MAXI Drainable Pouch

- Standard wear
- EasiClose™ WIDE outlet
- **Filter**
- Soft cloth on back (and front of opaque)
- Not made with natural rubber latex



11½" (29½ cm) / 655 mL

Units: 20

Code	Code	Cut	Stoma Size	HCPCS*
Transparent	Opaque			
15521	15531	Cut-to-fit	¾ - 3" (10-76 mm)	A4424
15522	15532	Pre-cut	1" (25 mm)	A4424
15523	15533	Pre-cut	1⅜" (30 mm)	A4424
15524	15534	Pre-cut	1⅝" (35 mm)	A4424

SenSura® Flat MAXI Drainable Pouch

- Standard wear
- EasiClose™ WIDE outlet
- **Without filter**
- Soft cloth on back
- Not made with natural rubber latex



Transparent 11½" (29½ cm) / 655 mL

Units: 20

Code	Cut	Stoma Size	HCPCS*
15821	Cut-to-fit	¾ - 3" (10-76 mm)	A5061

SenSura® Xpro Flat MAXI Drainable Pouch

- Extended wear
- EasiClose™ WIDE outlet
- **Filter**
- Soft cloth on back (and front of opaque)
- Not made with natural rubber latex



11½" (29½ cm) / 655 mL

Units: 10

Code	Code	Cut	Stoma Size	HCPCS*
Transparent	Opaque			
15981	NA	Cut-to-fit	¾ - 3" (10-76 mm)	A5056
NA	15991	Pre-cut	1" (25 mm)	A5056
NA	15992	Pre-cut	1⅜" (30 mm)	A5056
NA	15993	Pre-cut	1¼" (32 mm)	A5056
NA	15994	Pre-cut	1½" (38 mm)	A5056

SenSura® Convex Light MAXI Drainable Pouch

- Standard wear
- EasiClose™ WIDE outlet
- **Filter**
- Belt tabs for use with 4215, 4220
- Soft cloth on back (and front of opaque)
- Not made with natural rubber latex



11½" (29½ cm) / 655 mL

Units: 10

Code	Code	Cut	Stoma Size	HCPCS*
Transparent	Opaque			
15606	15608	Cut-to-fit	⅝ - 1⅜" (15-43 mm)	A4389
15623	15633	Pre-cut	1" (25 mm)	A4389
15624	15634	Pre-cut	1⅝" (28 mm)	A4389

SenSura® Xpro Convex Light MAXI Drainable Pouch

- Extended wear
- EasiClose™ WIDE outlet
- **Filter**
- Belt tabs for use with 4215, 4220
- Soft cloth on back (and front of opaque)
- Not made with natural rubber latex



11½" (29½ cm) / 655 mL

Units: 10

Code	Code	Cut	Stoma Size	HCPCS*
Transparent	Opaque			
15695	NA	Cut-to-fit	⅝ - 1⅜" (15-33 mm)	A5057
15696	NA	Cut-to-fit	⅝ - 1⅜" (15-43 mm)	A5057
NA	15697	Pre-cut	⅞" (22 mm)	A5057
NA	15698	Pre-cut	1" (25 mm)	A5057

SenSura® Flat MAXI Drainable Pouch

- Standard wear
- Soft outlet provides effective drainage; connects to a standard drain bag or Coloplast fistula drain bag #14010
- **Filter**
- Soft cloth on front and back
- Peek-a-boo inspection window allows easy application
- Not made with natural rubber latex



Opaque 12½" (32 cm) / 630 mL

Units: 30

Code	Cut	Stoma Size	HCPCS*
19004	Cut-to-fit	¾ - 3" (10-76 mm)	A4424

For bed drainage bag, see page 19.



SenSura® Standard Wear 1-Piece Post-Op Pouch with Window

- Flat
- Soft outlet can connect to Coloplast's fistula drain bag #14010, or a drain bag with a standard connection
- Easy-to-open and -close access window attached to pouch
- Soft cloth on back
- Not made with natural rubber latex



Transparent 13" (33 cm) / 830 mL Units: 5

Code	Code	Cut	Stoma Size	HCPCS*
------	------	-----	------------	--------

Non-sterile Sterile

19020	19010	Cut-to-fit	3/8 - 3 1/16" (10-78 mm)	A6154
19021	19011	Cut-to-fit	3/8 - 4 1/2" (10-115 mm)	A6154

SenSura® Standard Wear 1-Piece Post-Op Pouch

- Flat
- Soft outlet can connect to Coloplast's fistula drain bag #14010, or a drain bag with a standard connection
- Transparent
- Effective pouching solution for small fistulas
- Soft cloth on back
- Not made with natural rubber latex



Transparent 12 1/4" (31 cm) / 680 mL Units: 5

Code	Cut	Stoma Size	HCPCS*
------	-----	------------	--------

Non-sterile

19030	Cut-to-fit	3/8 - 3" (10-70 mm)	A6154
-------	------------	---------------------	-------

SenSura® Standard Wear 1-Piece Post-Op Pouch

- Flat
- Soft outlet can connect to Coloplast's fistula drain bag #14010, or a drain bag with a standard connection
- Opaque, with inspection window
- Effective pouching solution for small fistulas
- Soft cloth on back
- Not made with natural rubber latex



Opaque 12 3/4" (31 cm) / 630 mL Units: 5

Code	Cut	Stoma Size	HCPCS*
------	-----	------------	--------

Sterile

19001	Cut-to-fit	3/8 - 3" (10-76 mm)	A6154
-------	------------	---------------------	-------

SenSura® Flat MAXI Closed Pouch

- Standard wear
- **Filter**
- Soft cloth on front and back
- Not made with natural rubber latex



Opaque 8 1/2" (21 cm) / 550 mL Units: 30

Code	Cut	Stoma Size	HCPCS*
------	-----	------------	--------

15480	Cut-to-fit	3/8 - 3" (10-76 mm)	A4416
-------	------------	---------------------	-------

15484	Pre-cut	1 3/8" (35 mm)	A4416
-------	---------	----------------	-------

Urostomy

SenSura® Flat MAXI Urostomy Pouch

- Standard wear
- Multi-chambers minimize sloshing
- Anti-reflux valves prevent urine from washing over the stoma
- Soft outlet can be connected to urostomy night bag #21365 or any standard night or leg bag
- Soft cloth on back
- Not made with natural rubber latex



Transparent 10 3/8" (26 cm) / 400 mL Units: 10

Code	Cut	Stoma Size	HCPCS*
------	-----	------------	--------

11804	Cut-to-fit	3/8 - 3" (10-76 mm)	A5071
-------	------------	---------------------	-------

SenSura® Flat MIDI Urostomy Pouch

- Standard wear
- Multi-chambers minimize sloshing
- Anti-reflux valves prevent urine from washing over the stoma
- Soft outlet can be connected to urostomy night bag #21365 or any standard night or leg bag
- Soft cloth on back
- Not made with natural rubber latex



Transparent 9 1/2" (24 cm) / 330 mL Units: 10

Code	Cut	Stoma Size	HCPCS*
------	-----	------------	--------

11803	Cut-to-fit	3/8 - 2 1/2" (10-66 mm)	A5071
-------	------------	-------------------------	-------



SenSura® Xpro Flat MAXI Urostomy Pouch

- Extended wear
- Multi-chambers minimize sloshing
- Anti-reflux valves prevent urine from washing over the stoma
- Soft outlet can be connected to urostomy night bag #21365 or any standard night or leg bag
- Soft cloth on back (and front of opaque)
- Not made with natural rubber latex



10³/₈" (26 cm) / 400 mL Units: 10

Code	Code	Cut	Stoma Size	HCPCS*
Transparent Opaque				
11809	NA	Cut-to-fit	3/8 - 3" (10-76 mm)	A4391**
NA	11805	Pre-cut	7/8" (22 mm)	A4391**
NA	11806	Pre-cut	1" (25 mm)	A4391**
NA	11807	Pre-cut	1 3/16" (30 mm)	A4391**
NA	11808	Pre-cut	1 1/4" (32 mm)	A4391**

SenSura® Convex Light MAXI Urostomy Pouch

- Standard wear
- Multi-chambers minimize sloshing
- Anti-reflux valves prevent urine from washing over the stoma
- Soft outlet can be connected to urostomy night bag #21365 or any standard night or leg bag
- Belt tabs for use with 4215, 4220
- Soft cloth on back
- Not made with natural rubber latex



Transparent 10³/₈" (26 cm) / 400 mL Units: 10

Code	Cut	Stoma Size	HCPCS*
11814	Cut-to-fit	5/8 - 1 5/16" (15-33 mm)	A4392

SenSura® Xpro Convex Light MAXI Urostomy Pouch

- Extended wear
- Belt tabs for use with 4215, 4220
- Multi-chambers minimize sloshing
- Anti-reflux valves prevent urine from washing over the stoma
- Soft outlet can be connected to urostomy night bag #21365 or any standard night or leg bag
- Soft cloth on back (and front of opaque)
- Not made with natural rubber latex



10³/₈" (26 cm) / 400 mL Units: 10

Code	Code	Cut	Stoma Size	HCPCS*
Transparent Opaque				
11819	NA	Cut-to-fit	5/8 - 1 5/16" (15-33 mm)	A4393**
NA	11816	Pre-cut	7/8" (22 mm)	A4393**
NA	11817	Pre-cut	1" (25 mm)	A4393**
NA	11818	Pre-cut	1 1/4" (32 mm)	A4393**

SenSura® 1-Piece Single Use Kit

- Pouch #15521 MAXI / EasiClose™ WIDE outlet
- Instructions for use
- Stoma measuring guide
- Not made with natural rubber latex



Transparent Units: 5

Code	Cut	Stoma Size	HCPCS*
11008	Cut-to-fit	3/8 - 3" (10-76 mm)	A4424

SenSura® Xpro 1-Piece Urostomy Single Use Kit

- Extended wear
- Pouch #11809 MAXI / soft outlet
- Instructions for use
- Stoma measuring guide
- Urostomy adapter
- Not made with natural rubber latex



Transparent 10³/₈" (26 cm) / 400 mL Units: 5

Code	Cut	Stoma Size	HCPCS*
21005	Cut-to-fit	3/8 - 3" (10-76 mm)	A4391**

SenSura® Xpro 1-Piece Convex Light Urostomy Single Use Kit

- Extended wear
- Pouch #11819 MAXI / soft outlet
- Instructions for use
- Stoma measuring guide
- Urostomy adapter
- Not made with natural rubber latex

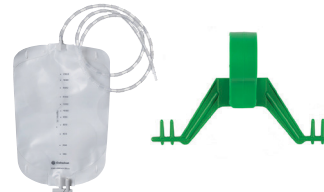


Transparent 10³/₈" (26 cm) / 400 mL Units: 5

Code	Cut	Stoma Size	HCPCS*
21006	Cut-to-fit	5/8 - 1 5/16" (15-33 mm)	A4393**

Urostomy Night Bag and Bag Hanger

See Supporting Products page 19 for more information.



Indicates convexity

*For important information regarding the use of HCPCS codes listed and code definitions see page 116

**Product has not been through PDAC verification



EasiClose™ WIDE outlets offer a 1/2" wider integrated closure for easy, fast emptying on the go.

Assura® Flat MAXI Drainable Pouch

- Standard wear
- EasiClose™ WIDE outlet
- **Filter**
- Soft cloth on back (and front of opaque)
- Not made with natural rubber latex



11½" (29 cm) / 530 mL

Units: 10

Code	Code	Cut	Stoma Size	HCPCS*
------	------	-----	------------	--------

Transparent Opaque

15860	15870	Cut-to-fit	¾ - 3" (10-75 mm)	A4424
NA	15874	Pre-cut	1" (25 mm)	A4424
NA	15875	Pre-cut	1⅜" (30 mm)	A4424
NA	15876	Pre-cut	1⅝" (35 mm)	A4424

Assura® Flat MAXI Drainable Pouch

- Standard wear
- EasiClose™ WIDE outlet
- **Without filter**
- Soft cloth on front and back
- Not made with natural rubber latex



Opaque 11½" (29 cm) / 530 mL

Units: 10

Code	Cut	Stoma Size	HCPCS*
15871	Cut-to-fit	¾ - 3" (10-75 mm)	A5061

Assura® Flat MAXI Drainable Pouch

- Extended wear
- EasiClose™ WIDE outlet
- **Without filter**
- Soft cloth on back (and front of opaque)
- Not made with natural rubber latex



11¼" (28½ cm) / 530 mL

Units: 10

Code	Code	Cut	Stoma Size	HCPCS*
------	------	-----	------------	--------

Transparent Opaque

15869	15879	Cut-to-fit	¾ - 3" (10-75 mm)	A4388
-------	-------	------------	-------------------	-------

Assura® Convex Light MAXI Drainable Pouch

- Standard wear
- EasiClose™ WIDE outlet
- **Filter**
- Belt tabs for use with 4215, 4220
- Soft cloth on back
- Not made with natural rubber latex



Transparent 11½" (29 cm) / 530 mL

Units: 10

Code	Cut	Stoma Size	HCPCS*
14511	Cut-to-fit	⅝ - 1⅝" (15-33 mm)	A4389
14512	Cut-to-fit	⅝ - 1⅞" (15-43 mm)	A4389

Assura® Flat MAXI Drainable Pouch

- Standard wear
- EasiClose™ outlet
- **Filter**
- Soft cloth on back (and front of opaque)
- Not made with natural rubber latex



11¼" (28½ cm) / 530 mL

Units: 10

Code	Code	Cut	Stoma Size	HCPCS*
------	------	-----	------------	--------

Transparent Opaque

13860	13870	Cut-to-fit	¾ - 3" (10-75 mm)	A4424
NA	13874	Pre-cut	1" (25 mm)	A4424
NA	13875	Pre-cut	1⅜" (30 mm)	A4424
NA	13876	Pre-cut	1⅝" (35 mm)	A4424

Assura® Flat MIDI Drainable Pouch

- Standard wear
- EasiClose™ outlet
- **Filter**
- Soft cloth on front and back
- Not made with natural rubber latex



Opaque 10¼" (26 cm) / 390 mL

Units: 10

Code	Cut	Stoma Size	HCPCS*
13840	Cut-to-fit	⅝ - 2½" (10-65 mm)	A4424
13844	Pre-cut	1" (25 mm)	A4424
13845	Pre-cut	1⅜" (30 mm)	A4424
13846	Pre-cut	1⅝" (35 mm)	A4424

Supporting Products
p. 9-20

Irrigation
p. 21-22

2-Piece Click
p. 23-46

2-Piece Flex
p. 47-58

1-Piece
p. 59-92

Fistula/Wound Management
p. 93-94

Pediatric
p. 95-104

Services
p. 105-120



Assura® Convex Light MAXI Drainable Pouch

- Standard wear
- EasiClose™ outlet
- **Filter**
- Belt tabs for use with 4215, 4220
- Soft cloth on back (and front of opaque)
- Not made with natural rubber latex

11¼" (28½ cm) / 530 mL

Code	Cut	Stoma Size	HCPCS*
Transparent	Opaque		
14411	14414	Cut-to-fit 5/8 - 1½/16" (15-33 mm)	A4389
14412	14415	Cut-to-fit 5/8 - 1½/16" (15-43 mm)	A4389
NA	14421	Pre-cut 7/8" (22 mm)	A4389
NA	14422	Pre-cut 1" (25 mm)	A4389
NA	14423	Pre-cut 1½/8" (28 mm)	A4389
NA	14424	Pre-cut 1¾" (31 mm)	A4389



Units: 10

Assura® Convex Light MIDI Drainable Pouch

- Standard wear
- EasiClose™ outlet
- **Filter**
- Belt tabs for use with 4215, 4220
- Soft cloth on front and back
- Not made with natural rubber latex

Opaque 10¼" (26 cm) / 390 mL

Code	Cut	Stoma Size	HCPCS*
14404	Cut-to-fit	5/8 - 1½/16" (15-33 mm)	A4389
14405	Cut-to-fit	5/8 - 1½/16" (15-43 mm)	A4389



Units: 10

Assura® Deep Convex MAXI Drainable Pouch

- Standard wear
- EasiClose™ outlet
- **Filter**
- Belt tabs for use with 4215, 4220
- Soft cloth on back (and front of opaque)
- Not made with natural rubber latex

11¼" (28½ cm) / 530 mL

Code	Code	Cut	Stoma Size	HCPCS*
Transparent	Opaque			
14103	14106	Cut-to-fit	5/8 - 1½/16" (15-43 mm)	A4389
14163	14173	Pre-cut	7/8" (22 mm)	A4389
14164	14174	Pre-cut	1" (25 mm)	A4389
14165	14175	Pre-cut	1½/8" (28 mm)	A4389
14166	14176	Pre-cut	1¾" (31 mm)	A4389



Units: 10

Assura® Deep Convex MIDI Drainable Pouch

- Standard wear
- EasiClose™ outlet
- **Filter**
- Belt tabs for use with 4215, 4220
- Soft cloth on front and back
- Not made with natural rubber latex

Opaque 10¼" (26 cm) / 390 mL

Code	Cut	Stoma Size	HCPCS*
14196	Cut-to-fit	5/8 - 1½/16" (15-43 mm)	A4389



Units: 10

Assura® Convex Light MAXI Drainable Pouch

- Extended wear
- EasiClose™ outlet
- **Without filter**
- Belt tabs for use with 4215, 4220
- Soft cloth on back (and front of opaque)
- Not made with natural rubber latex

11¼" (28½ cm) / 530 mL

Code	Code	Cut	Stoma Size	HCPCS*
Transparent	Opaque			
14413	NA	Cut-to-fit	5/8 - 1½/16" (15-33 mm)	A4390
14416	14419	Cut-to-fit	5/8 - 1½/16" (15-43 mm)	A4390



Units: 10

Assura® Flat MAXI Drainable Pouch

- Standard wear
- Clamp closure
- **Without filter**
- Soft cloth on back (and front of opaque)
- Not made with natural rubber latex

11¼" (28½ cm) / 530 mL

Code	Code	Cut	Stoma Size	HCPCS*
Transparent	Opaque			
12660	12670	Cut-to-fit	3/8 - 2¾" (10-70 mm)	A5061



Units: 10

Assura® Flat MINI Drainable Pouch

- Standard wear
- Clamp closure
- **Without filter**
- Soft cloth on back (and front of opaque)
- Not made with natural rubber latex

9¾" (24½ cm) / 230 mL

Code	Cut	Stoma Size	HCPCS*
Transparent	Opaque		
12630	12620	Cut-to-fit	3/8 - 2¼" (10-55 mm)



Units: 10



Assura® Deep Convex MAXI Drainable Pouch 

- Standard wear
- Clamp closure
- **Without filter**
- Belt tabs for use with 4215, 4220
- Soft cloth on back (and front of opaque)
- Not made with natural rubber latex



11¼" (28½ cm) / 530 mL Units: 10

Code	Code	Cut	Stoma Size	HCPCS*
Transparent	Opaque			
13706	12533	Cut-to-fit	5⁄8 - 1¹¹⁄₁₆" (15-43 mm)	A4389

Assura® Deep Convex MINI Drainable Pouch 

- Standard wear
- Clamp closure
- **Without filter**
- Belt tabs for use with 4215, 4220
- Soft cloth on back
- Not made with natural rubber latex



Transparent 9¾" (24½ cm) / 230 mL Units: 10

Code	Cut	Stoma Size	HCPCS*
13703	Cut-to-fit	5⁄8 - 1¹¹⁄₁₆" (15-43 mm)	A4389

Assura® Deep Convex MAXI Drainable Pouch 

- Extended wear
- Clamp closure
- **Without filter**
- Belt tabs for use with 4215, 4220
- Soft cloth on back (and front of opaque)
- Not made with natural rubber latex



11¼" (28½ cm) / 530 mL Units: 10

Code	Code	Cut	Stoma Size	HCPCS*
Transparent	Opaque			
12416	12419	Cut-to-fit	5⁄8 - 1¹¹⁄₁₆" (15-43 mm)	A4390

Assura® Standard Wear 1-Piece Post-Op Pouch with Window

- Flat
- Soft outlet can connect to Coloplast's fistula drain bag #14010, or a drain bag with a standard connection
- Easy-to-open and -close access window
- Soft cloth on back
- Not made with natural rubber latex



Transparent 13" (33 cm) / 830 mL Units: 5

Code	Code	Cut	Stoma Size	HCPCS*
Non-sterile	Sterile			
12800	12808	Cut-to-fit	¾ - 2¾" (10-70 mm)	A6154
12802	12810	Cut-to-fit	½ - 4" (13-100 mm)	A6154

Assura® Standard Wear 1-Piece Post-Op Pouch

- Flat
- Soft outlet can connect to Coloplast's fistula drain bag #14010, or a drain bag with a standard connection
- Soft cloth on back
- Not made with natural rubber latex

Transparent 12¼" (31 cm) / 690 mL Units: 5

Code	Code	Cut	Stoma Size	HCPCS*
Non-sterile	Sterile			
12805	12818	Cut-to-fit	¾ - 2¾" (10-70 mm)	A6154

Assura® Flat MAXI Closed Pouch

- Standard wear
- **Filter**
- Soft cloth on front and back
- Not made with natural rubber latex



Opaque 8½" (22 cm) / 530 mL Units: 30

Code	Cut	Stoma Size	HCPCS*
12170	Cut-to-fit	1³⁄₁₆ - 3" (20-75 mm)	A4416
12174	Pre-cut	1" (25 mm)	A4416
12175	Pre-cut	1³⁄₁₆" (30 mm)	A4416
12176	Pre-cut	1³⁄₈" (35 mm)	A4416
12177	Pre-cut	1³⁄₁₆" (40 mm)	A4416

Supporting Products
p. 9-20

Irrigation
p. 21-22

2-Piece Click
p. 23-46

2-Piece Flex
p. 47-58

1-Piece
p. 59-92

Fistula/Wound Management
p. 93-94

Pediatric
p. 95-104

Services
p. 105-120



Assura® Flat MIDI Closed Pouch

- Standard wear
- **Filter**
- Soft cloth on back (and front of opaque)
- Not made with natural rubber latex



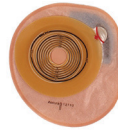
7" (18 cm) / 350 mL

Units: 30

Code	Code	Cut	Stoma Size	HCPCS*
Transparent	Opaque			
12130	12140	Cut-to-fit	1 ³ / ₁₆ - 2 ¹ / ₂ " (20-65 mm)	A4416
12134	12144	Pre-cut	1" (25 mm)	A4416
12135	12145	Pre-cut	1 ³ / ₁₆ " (30 mm)	A4416
12136	12146	Pre-cut	1 ³ / ₈ " (35 mm)	A4416
NA	12147	Pre-cut	1 ⁷ / ₁₆ " (40 mm)	A4416
NA	12149	Pre-cut	2" (50 mm)	A4416

Assura® Flat MINI Closed Pouch

- Standard wear
- **Filter**
- Soft cloth on front and back
- Not made with natural rubber latex



Opaque 5" (12 cm) / 170 mL

Units: 30

Code	Cut	Stoma Size	HCPCS*
12110	Cut-to-fit	1 ³ / ₁₆ - 2 ¹ / ₂ " (20-65 mm)	A4416

Assura® Convex Light MAXI Closed Pouch

- Standard wear
- **Filter**
- Belt tabs for use with 4215, 4220
- Soft cloth on back (and front of opaque)
- Not made with natural rubber latex



8 1/2" (22 cm) / 560 mL

Units: 10

Code	Code	Cut	Stoma Size	HCPCS*
Transparent	Opaque			
14441	14444	Cut-to-fit	5/8 - 1 ⁵ / ₁₆ " (15-33 mm)	A4417
14442	14445	Cut-to-fit	5/8 - 1 ¹¹ / ₁₆ " (15-43 mm)	A4417

Assura® Convex Light MIDI Closed Pouch

- Standard wear
- **Filter**
- Belt tabs for use with 4215, 4220
- Soft cloth on back (and front of opaque)
- Not made with natural rubber latex



7" (18 cm) / 350 mL

Units: 10

Code	Cut	Stoma Size	HCPCS*
Transparent	Opaque		
14431	14434	Cut-to-fit	5/8 - 1 ⁵ / ₁₆ " (15-33 mm)
14432	14435	Cut-to-fit	5/8 - 1 ¹¹ / ₁₆ " (15-43 mm)
NA	14451	Pre-cut	7/8" (22 mm)
NA	14452	Pre-cut	1" (25 mm)
NA	14453	Pre-cut	1 ¹ / ₈ " (28 mm)
NA	14454	Pre-cut	1 ¹ / ₄ " (31 mm)

Assura® Flat Stoma Cap

- Standard Wear
- **Filter**
- Belt tabs
- Soft cloth on back
- Small pouch size for intimate moments or colostomates who irrigate
- Not made with natural rubber latex



Opaque

Units: 30

Code	Cut	Stoma Size	HCPCS*
2501	Cut-to-fit	1 ³ / ₁₆ - 2 ¹ / ₄ " (20-55 mm)	A5055

Urostomy

Assura® Flat MAXI Urostomy Pouch

- Standard wear
- Multi-chambers minimize sloshing
- Soft outlet can be connected to urostomy night bag #21365 or any standard night or leg bag
- Soft cloth on back
- Not made with natural rubber latex



Transparent 10 3/4" (27 1/2 cm) / 470 mL

Units: 10

Code	Cut	Stoma Size	HCPCS*
14222	Cut-to-fit	3/8 - 2 1/4" (10-55 mm)	A5071

Supporting Products
p. 9-20

Irrigation
p. 21-22

2-Piece Click
p. 23-46

2-Piece Flex
p. 47-58

1-Piece
p. 59-92

Fistula/Wound Management
p. 93-94

Pediatric
p. 95-104

Services
p. 105-120



Assura® Convex Light MAXI Urostomy Pouch 

- Standard wear
- Multi-chambers minimize sloshing
- Soft outlet can be connected to urostomy night bag #21365 or any standard night or leg bag
- Belt tabs for use with 4215, 4220
- Soft cloth on back
- Not made with natural rubber latex



Transparent 10 3/4" (27 1/2 cm) / 470 mL Units: 10

Code	Cut	Stoma Size	HCPCS*
14717	Cut-to-fit	5/8 - 1 11/16" (15-43 mm)	A4392

Assura® Flat MAXI Urostomy Pouch

- Standard wear
- Soft outlet can be connected to urostomy night bag #21365 or any standard night or leg bag
- Soft cloth on back (and front of opaque)
- Not made with natural rubber latex



10 3/4" (27 cm) / 465 mL Units: 10

Code	Code	Cut	Stoma Size	HCPCS*
Transparent	Opaque			
5585	5580	Cut-to-fit	3/8 - 2 1/4" (10-55 mm)	A5071

Assura® Flat MIDI Urostomy Pouch

- Standard wear
- Soft outlet can be connected to urostomy night bag #21365 or any standard night or leg bag
- Soft cloth on back (and front of opaque)
- Not made with natural rubber latex



7" (18 cm) / 265 mL Units: 10

Code	Code	Cut	Stoma Size	HCPCS*
Transparent	Opaque			
5575	5570	Cut-to-fit	3/8 - 2 1/4" (10-55 mm)	A5071

Assura® Flat MAXI Urostomy Pouch

- Extended wear
- Soft outlet can be connected to urostomy night bag #21365 or any standard night or leg bag
- Soft cloth on back
- Not made with natural rubber latex



Transparent 9 1/2" (24 cm) / 375 mL Units: 10

Code	Cut	Stoma Size	HCPCS*
12474	Cut-to-fit	3/8 - 2 1/4" (10-55 mm)	A4391

Assura® Flat MIDI Urostomy Pouch

- Extended wear
- Soft outlet can be connected to urostomy night bag #21365 or any standard night or leg bag
- Soft cloth on back (and front of opaque)
- Not made with natural rubber latex



9 1/2" (24 cm) / 265 mL Units: 10

Code	Code	Cut	Stoma Size	HCPCS*
Transparent	Opaque			
12472	12471	Cut-to-fit	3/8 - 2 1/4" (10-55 mm)	A4391

Assura® Deep Convex MAXI Urostomy Pouch 

- Standard wear
- Soft outlet can be connected to urostomy night bag #21365 or any standard night or leg bag
- Belt tabs for use with 4215, 4220
- Soft cloth on back
- Not made with natural rubber latex



Transparent 10 3/4" (27 cm) / 465 mL Units: 10

Code	Cut	Stoma Size	HCPCS*
12595	Cut-to-fit	5/8 - 1 5/16" (15-33 mm)	A4392
12596	Cut-to-fit	5/8 - 1 11/16" (15-43 mm)	A4392
12991	Pre-cut	5/8" (15 mm)	A4392
12992	Pre-cut	3/4" (18 mm)	A4392
12993	Pre-cut	7/8" (22 mm)	A4392
12994	Pre-cut	1" (25 mm)	A4392
12995	Pre-cut	1 1/8" (28 mm)	A4392
12996	Pre-cut	1 1/4" (31 mm)	A4392
12997	Pre-cut	1 3/8" (35 mm)	A4392

Assura® Deep Convex MAXI Urostomy Pouch 

- Extended wear
- Soft outlet can be connected to urostomy night bag #21365 or any standard night or leg bag
- Belt tabs for use with 4215, 4220
- Soft cloth on back
- Not made with natural rubber latex



Transparent 10 3/4" (27 cm) / 465 mL Units: 10

Code	Cut	Stoma Size	HCPCS*
12432	Cut-to-fit	5/8 - 1 5/16" (15-33 mm)	A4393
12433	Cut-to-fit	5/8 - 1 11/16" (15-43 mm)	A4393

Supporting Products
p. 9-20

Irrigation
p. 21-22

2-Piece Click
p. 23-46

2-Piece Flex
p. 47-58

1-Piece
p. 59-92

Fistula/Wound Management
p. 93-94

Pediatric
p. 95-104

Services
p. 105-120



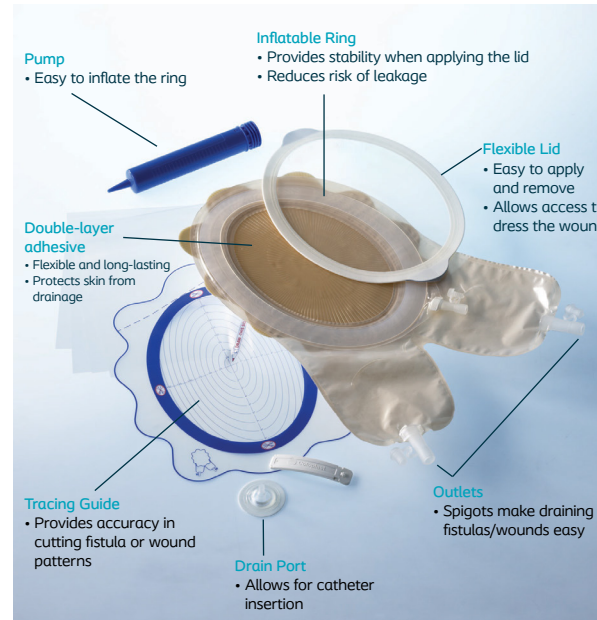
Assura® 1-Piece Single Use Kit

- Pouch #15860 MAXI / EasiClose™ WIDE outlet
- Instructions for use
- Stoma measuring guide
- Not made with natural rubber latex



Units: 5

Code	Cut	Stoma Size	HCPCS*
11005	Cut-to-fit	3/8 - 3" (10-76 mm)	A4424



Coloplast® Fistula and Wound Management System

Each system includes:

- 1 pouch and tracing guide
 - 1 drain port (extras sold separately on next page)
 - 1 lid (extras sold separately on next page)
 - 1 clear drape
 - 1 clamp (extras sold separately on next page)
 - Not made with natural rubber latex
- Each box includes one pump.



14050 Mini

14060 Midi

14070 Maxi

Units: 3

Units for 14050: 6

Code	Cut	Stoma Size	HCPCS*
14050	Mini	4 1/8 x 6 1/4" (104-159 mm)	A6154
14060	Midi	6 1/8 x 9" (156-228 mm)	A6154
14070	Maxi	8 1/8 x 11 3/4" (208-297 mm)	A6154

Supporting Products
p. 9-20

Irrigation
p. 21-22

2-Piece Click
p. 23-46

2-Piece Flex
p. 47-58

1-Piece
p. 59-92

Fistula/Wound Management
p. 93-94

Pediatric
p. 95-104

Services
p. 105-120



Fistula / Wound Pouch Accessories

Coloplast® Fistula Drain Port

For use with **Fistula and Wound Management Systems**. Drain port can be easily applied to the lid to allow for catheter insertion.



- For catheters ranging from 18FR - 22FR, the drain port is ready for use
- For catheters ranging from 24FR - 30FR, pull off the top of the drain port -DO NOT CUT
- Not made with natural rubber latex

Code	Size	Units
14015	One size	12

Coloplast® Bed Drainage Bag

Wide-lumen bag tubing specifically designed for fecal output.



- Holds up to 2 liters (2000 mL)
- Can be cut to find right length for bed drainage
- Compatible with fistula and wound management systems or high-output pouches
- Bag hanger (#5070) not included- order separately
- Not made with natural rubber latex

Units: 6

Code	Size	HCPCS*
14010	2 liters (2000 mL)	A4357

For matching bag hanger, see page 19.

Coloplast® Transparent Fistula Lid

Replacement lids match the transparent lid included with each fistula pouch.



- Not made with natural rubber latex

Code	Size	Units
14021	Mini (matches 14050)	10
14031	Midi (matches 14060)	10
14041	Maxi (matches 14070)	10

Coloplast® Pouch Clamp

Simple closure clamp is easy to manipulate, even for those with low dexterity.



- Not made with natural rubber latex

Units: 20

Code	Size	HCPCS*
9500	One size	A4363

SenSura® Mio Baby & Kids For the little fighters

Babies and kids present different pouching challenges than adults - so we've developed specific solutions for different stages in a child's life.

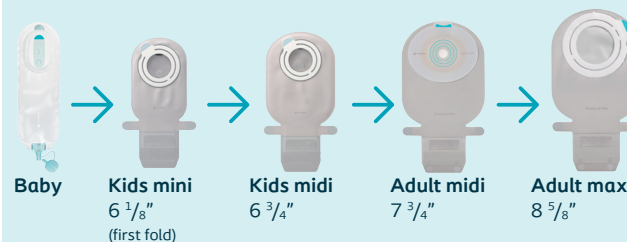


SenSura® Mio Baby
For babies 30 weeks' gestation to 6 months



SenSura® Mio Kids
For kids 6 months to 4 years

Stepping up over time, as kids grow



Ask us about our pediatric education!



Pediatric FAQ for parents & caregivers

Tipsheet with answers to frequently asked questions, like "what do I do if friends and family - or other kids

- have questions?" and "what do I do if my child pulls the pouch off?" Available in English and Spanish. Caregivers can request this from our Coloplast Care program.



Jake Gets a Stoma

A children's book written by Jake's mom, who wanted a better way to explain

the surgery and stoma management to her son and other kids going through the same thing.

Available to healthcare facilities via Coloplast sales representatives, or caregivers can request from our Coloplast Care program.



SenSura Mio Bunny

Coloplast offers a complimentary training bunny for product education use with both

SenSura Mio Baby & Kids. Available to healthcare facilities via Coloplast sales representatives.

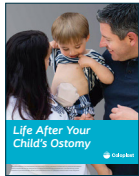
Limitations apply. The SenSura Mio Bunny is provided to healthcare facilities for families for teaching purposes only and should only be used with Coloplast products.



My child has an ostomy: resource sheet for caregivers

A fill-in-the-blank sheet to help parents communicate about their child's needs to daycare providers,

school nurses, and other caregivers. Caregivers can request this from our Coloplast Care program.

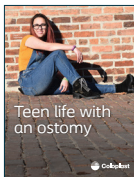


Life after your child's ostomy

A booklet covering an overview of anatomy, how to change a pouch, pouching system options, where to get

supplies, dietary notes, and other information. Available in English and Spanish.

Caregivers can request this from our Coloplast Care program.

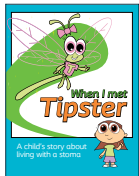


Teen life with an ostomy

Navigating school, what to wear, and hanging out with friends aren't covered by the average adult-oriented materials -

that's why we're so excited to feature tips from Paige, a teen who's been through it all!

Caregivers can request this from our Coloplast Care program.



When I met Tipster: A coloring book for children with ostomies

A simple coloring book to help kids engage with their ostomy surgery and

"new normal" - or learn more about a sibling's ostomy.

Available to healthcare facilities via Coloplast sales representatives, or caregivers can request from our Coloplast Care program.

Information from Coloplast Care is for educational purposes only. It is not intended to substitute for professional medical advice and should not be interpreted to contain treatment recommendations. You should rely on the healthcare professional who knows your individual history for personal medical advice and diagnosis.

2-Piece SenSura® Mio Baby

SenSura® Mio Baby

2-piece pouching system designed to tackle the challenges of preemies and babies from 30 weeks of gestation to 6 months of age.

SenSura® Mio Baby Flex 2-Piece Barrier

- Oval barrier accommodates one or multiple stomas
- No starter hole – custom cut
- Gentle adhesive sticks securely
- Removes gently with Brava® Baby Adhesive Remover
- Soft flange enables the pouch to be removed and replaced
- Sterilized surface, single-packed
- Not made with natural rubber latex



Cut-to-fit

Units: 5

Code	Stoma Size	Color	HCPCS*
18705	0 - 1 ⁹ / ₁₆ " (0-40 mm)		A4414

SenSura® Mio Baby Flex 2-Piece Pouch

- Adhesive coupling is easy to apply and remove
- Access window to refeed or expel gas
- Soft outlet fits to enteral feeding systems
- Sterile, single-packed
- Not made with natural rubber latex



Transparent, No filter

Units: 10

Code	Color	HCPCS*
18700		A5063

Brava® Baby Adhesive Remover

- Oil-based adhesive remover designed specifically for babies
- Liquid sachet (no wipe) can be used with cotton swabs or gauze
- Gently removes adhesive / adhesive residues from SenSura® Mio Baby Flex 2-Piece Barrier
- Not recommended for use with SenSura® Mio Kids or adult products
- Not made with natural rubber latex



Units: 30

Code	Size	HCPCS*
12014	3 mL sachet	A4455

Welcome to Coloplast
p. 4-8

Supporting Products
p. 9-20

Irrigation
p. 21-22

2-Piece Click
p. 23-46

2-Piece Flex
p. 47-58

1-Piece
p. 59-92

Fistula/Wound Management
p. 93-94

Pediatric
p. 95-104

Services
p. 105-120

*For important information regarding the use of HCPCS codes listed and code definitions see page 116



2-Piece SenSura® Mio Kids

SenSura® Mio Kids

1-piece and 2-piece pouching systems designed with BodyFit Technology to fit kids' active movements and rounded bellies. Designed with options to step up as kids grow, the range covers kids 6 months to 4 years of age (larger options for older kids are found in the SenSura Mio adult line).

2-Piece

SenSura® Mio Kids Flex 2-Piece Barrier

- Star-shaped, elastic barrier can be rotated for flexibility in placement
- No starter hole – custom cut
- Not made with natural rubber latex



Cut-to-fit Units: 5

Code	Stoma Size	Color	HCPCS*
18735	0 - 1 ¹ / ₁₆ " (0-27 mm)		A4414
18747	0 - 1 ³ / ₈ " (0-35 mm)		A4414

SenSura® Mio Kids Flex 2-Piece MINI Drainable Pouch

- EasiClose™ outlet
- Full-circle filter
- Neutral gray, water-resistant textile
- Small size enables kids to step up in pouch size over time
- Opaque gray includes inspection window
- Not made with natural rubber latex



6¹/₈" folded Units: 10

Code	Code	Color	HCPCS*
18721	18720		A4425

SenSura® Mio Kids Flex 2-Piece MIDI Drainable Pouch

- EasiClose™ outlet
- Full-circle filter
- Neutral gray, water-resistant textile
- Opaque gray includes inspection window
- Not made with natural rubber latex



6³/₄" folded Units: 10

Code	Code	Color	HCPCS*
18723	18722		A4425
18725	18724		A4425

2-Piece/ 1-Piece SenSura® Mio Kids

SenSura® Mio Kids Flex 2-Piece MIDI Urostomy Pouch

- Neutral gray, water-resistant textile
- Soft outlet can be connected to a drain bag for nighttime use, or a leg bag for kids in a wheelchair
- Connects directly to Urostomy Night Bag #21365 or any standard urine collection night bag with enclosed adapter
- Not made with natural rubber latex



Opaque gray 6³/₄" folded Units: 10

Code	Color	HCPCS*
18730		A5073
18731		A5073

1-Piece

SenSura® Mio Kids 1-Piece MIDI Drainable Pouch

- Star-shaped, elastic barrier with no starter hole – custom cut
- EasiClose™ outlet
- Full-circle filter
- Neutral gray, water-resistant textile
- Opaque gray includes inspection window
- Not made with natural rubber latex



6³/₄" folded | Cut-to-fit Units: 10

Code	Code	Stoma size	HCPCS*
18711	18710	0 - 1 ³ / ₈ " (0-35 mm)	A4424

SenSura® Mio Kids 1-Piece MIDI Urostomy Pouch

- Star-shaped, elastic barrier with starter hole
- Neutral gray, water-resistant textile
- Soft outlet can be connected to a drain bag for nighttime use, or a leg bag for kids in a wheelchair
- Connects directly to Urostomy Night Bag #21365 or any standard urine collection night bag with enclosed adapter
- Not made with natural rubber latex



Cut-to-fit Units: 10

Code	Code	Stoma size	HCPCS*
18712	18713	³ / ₈ - 1 ³ / ₈ " (10-35 mm)	A5071

Urostomy Night Bag and Bag Hanger

See Supporting Products on page 19 for more information.



Welcome to Coloplast
p. 4-8

Supporting Products
p. 9-20

Irrigation
p. 21-22

2-Piece Click
p. 23-46

2-Piece Flex
p. 47-58

1-Piece
p. 59-92

Fistula/Wound Management
p. 93-94

Pediatric
p. 95-104

Services
p. 105-120



Assura® AC (Adhesive Coupling) Pediatric

A simple, soft, secure system for neonates. The pouching system is easy to clean, and simple to handle with the EasiClose™ standard integrated outlet.

Assura® AC Pediatric Flat Barrier

- Standard wear
- No starter hole
- Not made with natural rubber latex



Cut-to-fit Units: 10

Code	Stoma Size	Color	HCPCS*
14307	0 - 5/8" (0-17 mm)		A4414
14308	0 - 1" (0-27 mm)		A4414

Assura® AC Pediatric Drainable Pouch

- EasiClose™ outlet
- Filter
- Soft cloth on back
- Not made with natural rubber latex



Units: 10

Code	Code	Length	Color	HCPCS*
Transparent	Opaque (Teddy Bear)			
14681	14691	5 1/2" (14 cm)		A4425
14682	14692	6 1/2" (16 cm)		A4425

Assura® 2-Piece Pediatric Pouching Systems

Specifically developed adhesive and a smaller barrier size for pediatrics, while a mix-and-match "green" flange size offers versatility. The SenSura® and Assura® pouches and barrier may be used interchangeably with "green"-sized adult SenSura® Click or Assura® products for a broad array of pouching options.

Assura® Pediatric Standard Wear Barrier

- Flat
- Not made with natural rubber latex



Cut-to-fit Units: 5

Code	Color	HCPCS*
2182		A4414

Assura® Pediatric Drainable Pouch

- Clamp closure
- Soft cloth on back
- Not made with natural rubber latex



Transparent 8 1/2" (21 cm) / 150 mL Units: 10

Code	Color	HCPCS*
2156		A4426

Assura® Pediatric Closed Pouch

- Soft cloth on front and back
- Not made with natural rubber latex



Opaque 5 3/4" (14 1/2 cm) Units: 30

Code	Color	HCPCS*
2161		A4423

Assura® Stoma Cap

- With filter
- Small size is optimal for swimming at the pool
- Not made with natural rubber latex



Opaque Units: 30

Code	Color	HCPCS*
2801		A5055

Assura® Pediatric Urostomy Pouch

- Soft outlet can be connected to a drain bag for nighttime use, or a leg bag for kids in a wheelchair - see page 19 for options
- Soft cloth on back
- Not made with natural rubber latex



Transparent 8 1/2" (21 cm) / 150 mL Units: 10

Code	Color	HCPCS*
1789		A4433

Assura® Urostomy Micro-Pouch

- Miniature size prevents twisting
- Soft outlet can be connected to a drain bag for nighttime use, or a leg bag for people in a wheelchair - see page 19 for options
- Soft cloth on back
- Not made with natural rubber latex



Transparent 6" (15 cm) Units: 10

Code	Color	HCPCS*
14204		A4433

Assura® Urostomy Minicap

- Ultra-absorbent material inside
- Small size is optimal for swimming at the pool
- Not made with natural rubber latex



Opaque 100 mL Units: 30

Code	Color	HCPCS*
2807		A5055

Supporting Products
p. 9-20

Irrigation
p. 21-22

2-Piece Click
p. 23-46

2-Piece Flex
p. 47-58

1-Piece
p. 59-92

Fistula/Wound Management
p. 93-94

Pediatric
p. 95-104

Services
p. 105-120



ColoKids™ 1-Piece Pediatric Pouching Systems

Utilizes Assura® technology and features small sizes for pediatric-friendly pouching options.

ColoKids™ Flat 1-Piece Drainable Pouch

- Standard wear
- Clamp closure
- Soft cloth on back
- Not made with natural rubber latex



Transparent				Units: 10
Code	Cut	Stoma Size	HCPCS*	
2115	Cut-to-fit	3/8 - 1 3/8" (10-35 mm)	A5061	

ColoKids™ Flat 1-Piece Closed Pouch

- Standard wear
- Soft cloth on back
- Not made with natural rubber latex



Transparent				Units: 30
Code	Cut	Stoma Size	HCPCS*	
2125	Cut-to-fit	3/8 - 1 3/8" (10-35 mm)	A4416	

ColoKids™ Flat 1-Piece Urostomy Pouch

- Standard wear
- Soft outlet can be connected to a drain bag for nighttime use, or a leg bag for people in a wheelchair - see page 19 for options.
- Soft cloth on back
- Not made with natural rubber latex

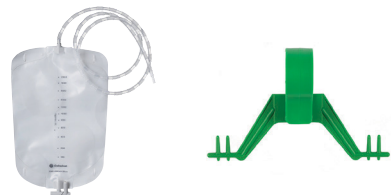


Transparent				Units: 10
Code	Cut	Stoma Size	HCPCS*	
8009	Cut-to-fit	5/8 - 1 3/8" (15-35 mm)	A5071	

Night Drainage Bags

Urostomy Night Bag and Bag Hanger

See Supporting Products on page 19 for more information.



Using Brava® Supporting Products with Pediatrics

Based on updated documentation guidelines, real-life use, and existing biological evaluation reports, Coloplast reassessed the risk to pediatrics with the use of supporting products. Updated guidelines are provided below.

Product	Caution
Brava® Protective Seal	No caution
Brava® Protective Seal Convex	
Brava® Elastic Barrier Strips	
Brava® Protective Sheet	
Brava® Lubricating Deodorant	
Brava® Skin Cleanser Wipes	
Brava® Moldable Ring	<i>This product is non-sterile and should be used with caution on premature babies or infants receiving incubator care as it may lead to increased risks of infection.</i>
Brava® Strip Paste	
Brava® Paste	
Brava® Powder	<i>Not recommended to be used on premature infants, neonates or infants below 4 kg (8.8 lbs) because of their immature skin.</i>
Brava® Adhesive Remover Wipes	
Brava® Skin Barrier Wipes	<i>Not recommended to be used on premature infants, neonates or infants below 4 kg (8.8 lbs) because of their immature skin. Avoid direct inhalation as it may give rise to temporary irritation of the airways.</i>
Brava® Adhesive Remover Spray	
Brava® Skin Barrier Spray	

Any use outside of our indication is considered off-label use and is up to the clinician's own discretion. Clinicians must weigh the risks and benefits of available products to make an informed and appropriate decision for each patient.

*For important information regarding the use of HCPCS codes listed and code definitions see page 116

Supporting Products
p. 9-20

Irrigation
p. 21-22

2-Piece Click
p. 23-46

2-Piece Flex
p. 47-58

1-Piece
p. 59-92

Fistula/Wound Management
p. 93-94

Pediatric
p. 95-104

Services
p. 105-120

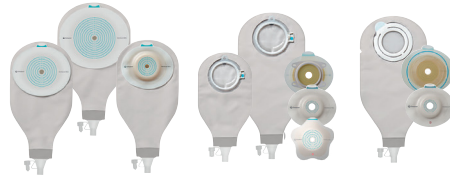


SenSura® Mio carries patients through every stage of life

SenSura® Mio Baby & Kids



SenSura® Mio High Output and Post-Op



SenSura® Mio



Because *every fit* matters



Making life easier_

Supporting Products
p. 9-20

Irrigation
p. 21-22

2-Piece Click
p. 23-46

2-Piece Flex
p. 47-58

1-Piece
p. 59-92

Fistula/Wound Management
p. 93-94

Pediatric
p. 95-104

Services
p. 105-120



Connect your patients to confidence

About the team

Coloplast Care Advisors assist patients with their intimate healthcare needs, by providing personalized lifestyle and product advice and ongoing resources. We will assist in coordinating communications with a supplier to place an order when appropriate, or refer back to clinicians if there are concerns.

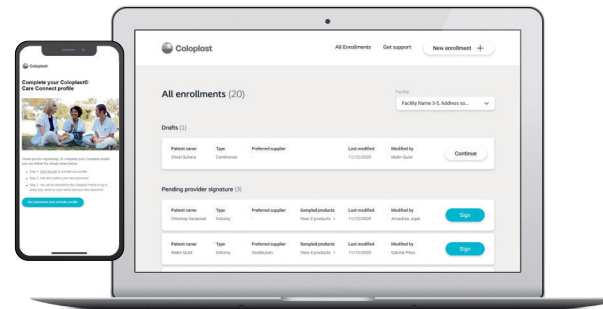
Tell your patients we will be calling from:
1-877-858-2656 Hablamos español
www.ostomy.coloplastcare.us



Coloplast Care *Connect*

Connect can help you:

- Streamline ordering and enrollment
- View a dashboard of enrolled patients within your facility
- Share workflows and finish documentation before the patient transitions



Accessible on desktop and mobile devices

www.coloplastcareconnect.us



Scan the QR code with your smartphone camera and select "Start Guest Enrollment" to get started!

Welcome to Coloplast
p. 4-8

Supporting Products
p. 9-20

Irrigation
p. 21-22

2-Piece Click
p. 23-46

2-Piece Flex
p. 47-58

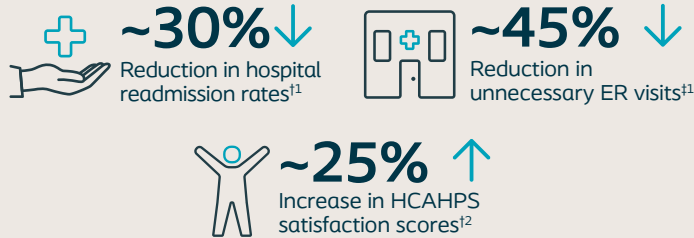
1-Piece
p. 59-92

Fistula/Wound Management
p. 93-94

Pediatric
p. 95-104

Services
p. 105-120

Ostomy patients enrolled experienced:



Each person's situation is unique and risks, outcomes, experience, and results may vary.

Ostomy patients that engage with our Coloplast Care Advisors do better over time and had statistically fewer peristomal skin conditions³



¹Observed values within the first month of discharge.

²Observed values after the first month of discharge.

1. Rojanasart, S., The Impact of a Readily Available, Post-Discharge Support Program for Ostomy Surgery Patients on Preventable Health Care Utilization, Jan/Feb 2018 JWOCN.
2. Helder, D., O'Day, M., Measuring System Impact by Improving the Ostomy Patient Experience from a Product Standardization Project in a 13-Hospital Integrated Delivery Network in the Midwest. J WOCN, 2017, 44(35): S53
3. Burton, M, et. al, The positive Impact of Coloplast Care, a Patient-support program: results from Patient reported outcomes, Poster Presentation, NorthEast Regional Affiliate of the WOCN Society, Oct 2023.

Information from Coloplast Care is for educational purposes only. It is not intended to substitute for professional medical advice and should not be interpreted to contain treatment recommendations. You should rely on the healthcare professional who knows your individual history for personal medical advice and diagnosis.



Trust our Clinician Support Line to support your discharge process for ostomy patients
Call us at 1-855-863-3912

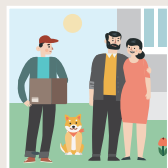


How does the discharge process for ostomy patients work?

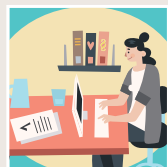
Patient is enrolled



Coloplast Care Welcome Kit* ships to patient's home



Advisor calls patient to educate and confirm insurance for ordering supplies



Patient is connected with a supplier for fulfillment



Supplier ships and bills insurance



Our Care Advising teams participate in industry education from WEB WOC® Programs, an accredited and internationally recognized WOC education provider.



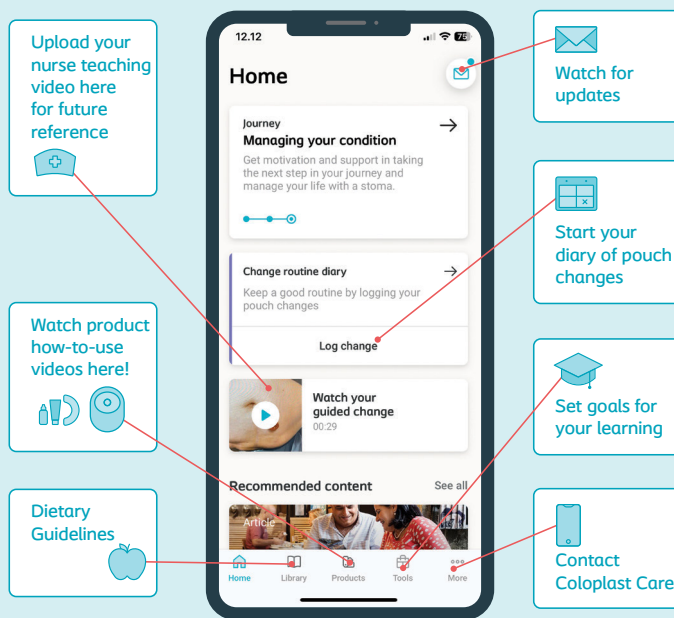
WEB WOC is a registered trademark of WEB WOC nursing education program. Used with permission.

*Limitations apply

The **MyOstomyLife** app complements your teaching, creates a personalized care experience for your patient and contributes to improving outcomes by connecting to a Coloplast Care Advisor.

MyOstomyLife will:

- Allow patients to track and upload their diary report of skin condition, stoma complications or leakage when they change their pouch
- Alert the Coloplast Care team if patient is struggling
- Available in iPhone app store or the Google Play Store for android phones



Your patients can find educational information in the app. Add your patient's email to invite them to the app using Coloplast Care **Connect**.

For questions on how the app supports Telehealth or for printable tear sheets visit: <https://coloplast.to/telehealth>



Coloplast Care Welcome Kits are tailored to include Living Well books specific to each type of ostomy, along with appropriate items sent per ostomy type.

Ostomy Self-Assessment Tools

- BodyCheck
- Ostomy Check
- Troubleshooter
- Apply-Remove-Check (ARC)

Diaries:

- Pouch change diary
- Exercise diary
- Hernia prevention action plan
- Ostomy Wellness Output Diary

Educational Guides

- Life with your ostomy
- Life after your child's ostomy
- Teen life with an ostomy

Product Pictorial Guide - Also available in Spanish

NOTE: These are abbreviated instructions designed to visually show how to use the product. Always refer to the product labeling (including the package insert) before using.

- SenSura® Mio 1-Piece Pouching System
- SenSura® Mio Click 2-Piece Pouching System
- SenSura® Mio Flex 2-Piece Pouching System
- SenSura® 1-Piece Pouching System
- SenSura® Click 2-Piece Pouching System
- SenSura® Flex 2-Piece Pouching System
- SenSura® Mio 1-Piece Urostomy Pouching System
- SenSura® Mio Click 2-Piece Urostomy Pouching System
- SenSura® Mio Flex 2-Piece Urostomy Pouch System
- SenSura® Mio Baby 2-Piece Flex Barrier, Pouch, and Brava® Baby Adhesive Remover

Spanish Educational Tools

Educational Guides

- Life with your ostomy
- Life after your child's ostomy



Also please note, that our Coloplast Care website can be translated in Chrome browser, www.ostomy.coloplastcare.us

Other languages also available in digital format only: Arabic, Chinese, French, German, Russian and Vietnamese

For additional educational resources, visit <https://coloplast.to/patienteducation>



Supporting your care of every patient

You play an important role in the lives of your patients, which is why we want to support your professional development and day-to-day work for your patient's benefit and for yours.

www.coloplastprofessional.us



Supporting Products
p. 9-20

Irrigation
p. 21-22

2-Piece Click
p. 23-46

2-Piece Flex
p. 47-58

1-Piece
p. 59-92

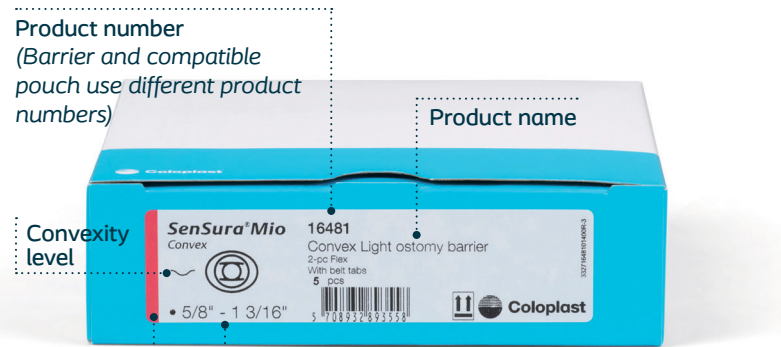
Fistula/Wound Management
p. 93-94

Pediatric
p. 95-104

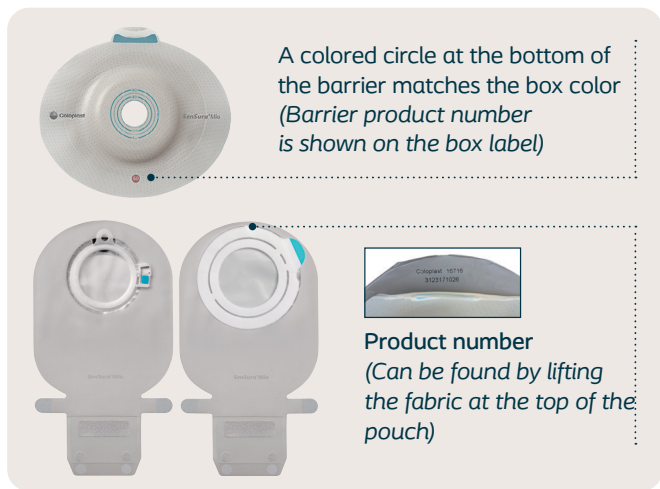
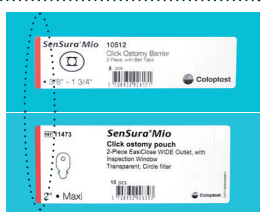
Services
p. 105-120



SenSura® Mio 2-piece pouching system



Color
(Barrier and pouch must use matching color products)



SenSura® Mio 1-piece pouching system



Product number
(Can be found by lifting the fabric at the top of the pouch)

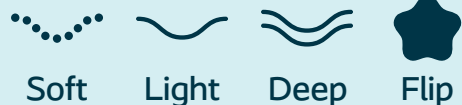


Convexity level

Identifying convexity

From the box

Convexity level - Check product guide for availability



Identifying convexity

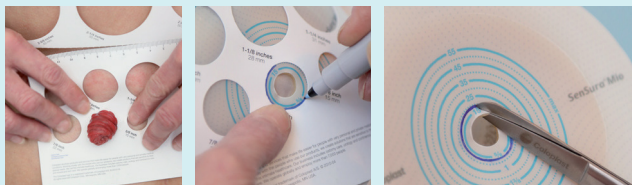
From the item

- Convex barriers have a dome-like structure
- Convex Flip barriers have a star shape



Prior to use, refer to the product 'Instructions for use' for intended use and relevant safety information.

Cut the barrier to fit the exact size and shape of the stoma



Make sure the skin around the stoma is clean and dry

- Use water and a clean cloth
- Ensure all residue is removed
- Do not use soaps, moisturizers, or oil-based products as these may affect adhesion
- Consult your Wound Ostomy Continence (WOC) nurse for questions about supporting products



Apply gentle hand pressure to the entire barrier to initiate adhesion

- Run a finger around the stoma, then smooth outwards to the edges
- Ensure the entire barrier has been massaged into the skin

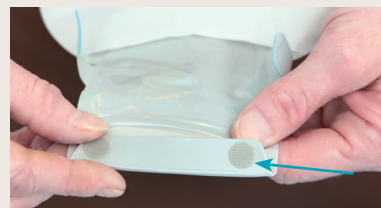


For product support call the Coloplast Care Clinician Support Line at 1-855-863-3912

Prior to use, refer to the product 'Instructions for use' for intended use and relevant safety information.

Close drainable pouches prior to use

- For a drainable fecal pouch, fold the outlet towards the head of the patient three times. Fold the two turquoise tabs inwards to secure the VELCRO® brand fastener.

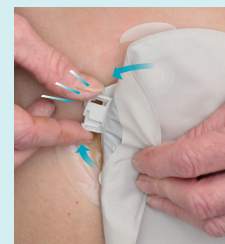


When using a 2-piece system, grab both a barrier and a pouch

- For **SenSura® Mio Flex**, align the edge of the adhesive ring with the turquoise ring on the outer rim of the barrier and apply gentle pressure around the barrier coupling to secure.
- For **SenSura® Mio Click**, ensure the coupling is securely fastened all the way around. Press firmly at the 6 o'clock position and run your fingers around to the 12 o'clock position. Remember to lock the mechanical ring after the pouch is applied. The coupling will "click" when it is locked.



SenSura® Mio Flex



SenSura® Mio Click

For product support call the Coloplast Care Clinician Support Line at 1-855-863-3912

VELCRO® is a registered trademark of Velcro BVBA. Used with permission.



Medicare Utilization - Ostomy

Usual maximum limits for some products from the Medicare Local Coverage Determinations (LCD) are shown below. The amount of ostomy supplies varies by patient based on the type of ostomy, its location, its construction, and the condition of the peristomal skin. The table below shows the maximum number of items that are usually medically necessary for patients with ostomies. It may be more or less depending on the factors that affect the frequency of barrier and pouch change. The medical necessity for a greater quantity of supplies must be clearly documented in the patient's medical record (physician's signed and dated order).

HCPCS*	Short Description	Usual Maximum
A4357	Bedside drainage bag	2 ea/month
A4361	Ostomy faceplate, each	3 ea/6 months
A4362	Skin barrier, solid, 4x4 or equivalent; each*	20 ea/month
A4363	Ostomy clamp replacement	none*
A4367	Ostomy belt, each	1 ea/month
A4368	Ostomy filter	none*
A4369	Ostomy skin barrier; liquid, per ounce	2 oz./month
A4371	Ostomy skin barrier powder, per ounce	10 oz/6 months
A4372	Ostomy skin barrier, 4 x 4, standard wear, CONVEX	none*
A4373	Ostomy skin barrier, with flange, CONVEX	none*
A4385	Ostomy skin barrier, 4 x 4, extended wear, FLAT	none*
A4388	One-piece ostomy drainable pouch and barrier, extended wear, FLAT	none*
A4389	One-piece ostomy drainable pouch and barrier, CONVEX	none*
A4390	One-piece ostomy drainable pouch, extended wear barrier, CONVEX	none*
A4391	One-piece urinary pouch, extended wear barrier, FLAT	none*
A4392	One-piece urinary pouch, standard wear barrier, FLAT	none*
A4394	Ostomy deodorant per ounce	none*
A4396	Ostomy belt with peristomal hernia support	none*
A4398	Ostomy irrigation supply; bag, each	2 ea/6 months
A4399	Ostomy irrigation supply; cone/catheter, with or without brush	2 ea/6 months
A4404	Ostomy ring, each	10 ea/month
A4405	Ostomy skin barrier, non-pectin based, paste, per ounce	4 oz/month
A4406	Ostomy skin barrier, pectin-based, per ounce	4 oz/month
A4407	Two-piece ostomy skin barrier, with flange, extended wear, CONVEX, (4 x 4 inches or smaller)	none*
A4408	Two-piece ostomy skin barrier, with flange extended wear, CONVEX, (larger than 4 x 4 inches)	none*
A4409	Two-piece ostomy skin barrier, with flange, extended wear, FLAT, (4 x 4 inches or smaller)	none*
A4410	Two-piece ostomy skin barrier, with flange, extended wear, FLAT, (larger than 4 x 4 inches)	none*
A4411	Two-piece ostomy solid skin barrier, extended wear, CONVEX	none*
A4412	Two-piece high output ostomy drainable pouch without filter	none*

* No published Medicare usual maximum. Monthly quantity subject to medical necessity documentation.

**Elastic Barrier Strips - Curved or Straight: 40 strips/month

HCPCS*	Short Description	Usual Maximum
A4413	Two-piece high output ostomy drainable pouch with filter	none*
A4414	Two-piece ostomy skin barrier with flange, FLAT (4x4 inches or smaller)	20 ea/month
A4415	Two-piece ostomy skin barrier, with flange, FLAT, greater than 4 x 4 inches	20 ea/month
A4416	One-piece ostomy closed pouch and barrier with filter, FLAT	60 ea/month
A4417	One-piece ostomy closed pouch and barrier with filter, CONVEX	60 ea/month
A4418	One-piece ostomy closed pouch with filter and barrier	60 ea/month
A4419	Two-piece ostomy closed pouch with filter for non-locking system	60 ea/month
A4423	Two-piece ostomy closed pouch with filter for locking system	60 ea/month
A4424	One-piece ostomy drainable pouch and barrier with filter, FLAT	20 ea/month
A4425	Two-piece ostomy drainable pouch with filter for non-locking system	20 ea/month
A4426	Two-piece ostomy drainable pouch without filter for locking system	20 ea/month
A4427	Two-piece ostomy drainable pouch with filter for locking system	20 ea/month
A4433	Two-piece ostomy urinary pouch for locking system	20 ea/month
A4436	Irrigation supply, sleeve, reusable, per month	1 month supply
A4437	Irrigation supply, sleeve, reusable, per month	1 month supply
A4455	Adhesive remover or solvent, per ounce	16 oz/6 months
A4456	Adhesive remover, wipes	none*
A5055	Stoma cap	31 ea/month
A5056	One-piece drainable ostomy pouch, extended wear with filter	40 ea/month
A5057	One-piece drainable ostomy pouch extended wear with filter, CONVEX	40 ea/month
A5061	One-piece ostomy drainable pouch and barrier, FLAT	20 ea/month
A5063	Two-piece ostomy drainable pouch for barrier with flange	20 ea/month
A5071	One-piece ostomy urinary pouch	20 ea/month
A5073	Two-piece ostomy urinary pouch	20 ea/month
A5120	Skin barrier, wipes or swabs, each	150 ea/6 months
A5121	Solid skin barrier, 6x6 or equivalent, each**	20 ea/month
A5122	Solid skin barrier, 8x8 or equivalent, each	20 ea/month
A6154	Wound pouch, each	3/week

* No published Medicare usual maximum. Monthly quantity subject to medical necessity documentation.

**Elastic Barrier Strips - Y-shape or XL: 60 strips/month

Supporting Products
p. 9-20

Irrigation
p. 21-22

2-Piece Click
p. 23-46

2-Piece Flex
p. 47-58

1-Piece
p. 59-92

Fistula/Wound Management
p. 93-94

Pediatric
p. 95-104

Services
p. 105-120



Reimbursement Disclaimer: Coloplast Corp. provides this information for convenience and your general reference only. It does not constitute legal advice or a recommendation regarding clinical practice. Reimbursement, coverage and payment policies can vary from one insurer and region to another and is subject to change without notice. The provider has the responsibility to determine medical necessity and to submit appropriate codes and charges for care provided. Coloplast does not guarantee coverage or payment of products and Coloplast makes no guarantee that the use of this information will prevent differences of opinion or disputes with Medicare, insurers, or other payers as to the correct form of billing or the amount that will be paid. This information is provided for your general information only and is not intended to replace any advice you receive from your own internal or external insurance coverage consultants, reimbursement specialists or legal counsel.

HCPCS Code Reference

A4357	Bedside drainage bag, day or night, with or without anti-reflux device, with or without tube, each
A4361	Ostomy faceplate, each
A4362	Solid skin barrier; solid, 4x4 or equivalent; each
A4363	Ostomy clamp, any type, replacement only, each
A4366	Ostomy vent, any type, each
A4367	Ostomy belt, each
A4368	Ostomy filter, any type, each
A4369	Ostomy skin barrier liquid (spray, brush, etc.), per ounce
A4371	Ostomy skin barrier powder, per ounce
A4372	Ostomy skin barrier, solid 4x4 or equivalent, standard wear, with built-in convexity, each
A4373	Ostomy skin barrier, with flange (solid, flexible or accordion), with built-in convexity, any size, each
A4385	Ostomy skin barrier, solid 4 x 4 or equivalent, extended wear, without built-in convexity, each
A4388	Ostomy pouch, drainable, with extended wear barrier attached, (1 piece), each
A4389	Ostomy pouch, drainable, with barrier attached, with built-in convexity (1-piece), each
A4390	Ostomy pouch, drainable, with extended wear barrier attached, with built-in convexity (1-piece), each
A4391	Ostomy pouch, urinary, with extended wear barrier attached (1-piece), each
A4392	Ostomy pouch, urinary with standard wear barrier attached, with built-in convexity (1-piece), each
A4393	Ostomy pouch, urinary, with extended wear barrier attached, with built-in convexity (1 pc), each
A4394	Ostomy deodorant, with or without lubricant, for use in ostomy pouch, per fluid ounce
A4396	Ostomy belt with peristomal hernia support
A4397	Irrigation supply; sleeve, each
A4398	Ostomy irrigation supply; bag, each
A4399	Ostomy Irrigation supply; cone /catheter, with or without brush
A4404	Ostomy ring, each
A4405	Ostomy skin barrier, non-pectin based, paste, per ounce
A4406	Ostomy skin barrier, pectin-based, paste, per ounce
A4407	Ostomy skin barrier, with flange (solid, flexible, or accordion), extended wear, with built-in convexity, 4x4 inches or smaller, each
A4408	Ostomy skin barrier, with flange (solid, flexible or accordion), extended wear, with built-in convexity, larger than 4x4 inches, each

HCPCS Code Reference

A4409	Ostomy skin barrier, with flange (solid, flexible or accordion), extended wear, without built in convexity, 4x4 inches or smaller, each
A4410	Ostomy skin barrier with flange (solid, flexible or accordion), extended wear, without built-in convexity, larger than 4x4 inches, each
A4411	Ostomy skin barrier, solid 4x4 or equivalent, extended wear, with built-in convexity, each
A4412	Ostomy pouch, drainable, high output, for use on a barrier with flange (2-piece system), without filter, each
A4413	Ostomy pouch, drainable, high output, for use on a barrier with flange (2 piece system) with filter, each
A4414	Ostomy skin barrier, with flange (solid, flexible or accordion), without built-in convexity, 4x4 inches or smaller, each
A4415	Ostomy skin barrier, with flange (solid, flexible or accordion), without built-in convexity, larger than 4x4 inches, each
A4416	Ostomy pouch, closed, with barrier attached, with filter (1-piece), each
A4417	Ostomy pouch, closed, with barrier attached, with built-in convexity, with filter (1-piece), each
A4418	Ostomy pouch, drainable, high output, for use on a barrier with flange (2-piece system), without filter, each
A4419	Ostomy pouch, closed; for use on barrier with non-locking flange, with filter (2-piece), each
A4421	Ostomy supply; miscellaneous
A4422	Ostomy pouch absorbent material (sheet, pad, crystal packet) for use in ostomy pouch to thicken liquid stomal output, each
A4423	Ostomy pouch, closed; for use on barrier with locking flange, with filter (2-piece), each
A4424	Ostomy pouch, drainable, with barrier attached, with filter (1-piece), each
A4425	Ostomy pouch, drainable; for use on barrier with non-locking flange, with filter (2-piece system), each
A4426	Ostomy pouch, drainable; for use on barrier with locking flange (2-piece system), each
A4427	Ostomy pouch, drainable; for use on barrier with locking flange, with filter (2 piece system), each
A4428	Ostomy pouch, urinary, with extended wear barrier attached, with faucet-type tap with valve (1-piece), each
A4429	Ostomy pouch, urinary, with barrier attached, with built-in convexity, with faucet-type tap with value (1-piece), each
A4430	Ostomy pouch, urinary, with extended wear barrier attached, with built-in convexity, with faucet-type tap with valve (1-piece), each
A4431	Ostomy pouch, urinary; with barrier attached, with faucet-type tap with valve (1- piece), each
A4432	Ostomy pouch, urinary; with barrier attached, with faucet-type tap with value (1- piece), each
A4433	Ostomy pouch, urinary; for use on barrier with locking flange (2-piece), each
A4434	Ostomy pouch, urinary; for use on barrier with locking flange, with faucet-type tap with valve (2-piece), each
A4435	Ostomy pouch, drainable, high output, with extended wear barrier (1-piece system), with or without filter, each
A4436	Irrigation supply; sleeve, reusable, per month
A4437	Irrigation supply; sleeve, disposable, per month

Supporting Products
p. 9-20

Irrigation
p. 21-22

2-Piece Click
p. 23-46

2-Piece Flex
p. 47-58

1-Piece
p. 59-92

Fistula/Wound Management
p. 93-94

Pediatric
p. 95-104

Services
p. 105-120



HCPCS Code Reference

A4455	Adhesive remover or solvent (for tape, cement or other adhesive), per ounce
A4456	Adhesive remover, wipes, any type, each
A5055	Stoma cap
A5056	Ostomy pouch, drainable, with extended wear barrier attached, with filter (1-piece), each
A5057	Ostomy pouch, drainable, with extended wear barrier attached, with built in convexity, with filter, (1-piece), each
A5061	Ostomy pouch, drainable; with barrier attached, (1-piece), each
A5062	Ostomy pouch, drainable; without barrier attached (1-piece), each
A5063	Ostomy pouch, drainable; for use on barrier with flange (2-piece system), each
A5071	Ostomy pouch, urinary; with barrier attached (1-piece), each
A5072	Ostomy pouch, urinary; without barrier attached (1-piece), each
A5073	Ostomy pouch, urinary; for use on barrier with flange (2-piece), each
A5093	Ostomy accessory; convex insert
A5120	Skin barrier, wipes or swabs, each
A5121	Skin barrier; solid, 6x6 or equivalent, each
A5122	Skin barrier; solid, 8x8 or equivalent, each

Making life easier

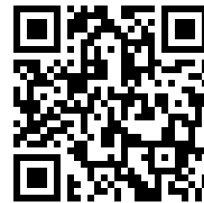
Patient Education Resources

Scan here to enroll your patients into the Coloplast Care program



Healthcare Professional Login
(coloplastcareconnect.us)

Scan here for ostomy patient education resources including How-To videos.



coloplastprofessional.us

Welcome to Coloplast
p. 4-8

Supporting Products
p. 9-20

Irrigation
p. 21-22

2-Piece Click
p. 23-46

2-Piece Flex
p. 47-58

1-Piece
p. 59-92

Fistula/Wound Management
p. 93-94

Pediatric
p. 95-104

Services
p. 105-120

